

For corners in  
Lenawee Located In: Corner Code #  
 (County)

1. Public Land Survey T-6-S R-1-E 1-5  
 T R  
 T R  
 T R

2. Property Controlling S T R  
 in Section S T R  
 3. Miscellaneous S T R  
 Property in Sec S T R

STATE OF MICHIGAN  
 LEWIS COUNTY  
 FILED  
 9 JUN 97 12:34 P.M.  
 VICTORIA J. DANIELS  
 REGISTER OF DEEDS

Register of Deeds Stamp & File Number

4. Lot No. \_\_\_\_\_, Recorded Plat \_\_\_\_\_  
 5. Private Claims \_\_\_\_\_

	A	B	C	D	E	F	G	H	I	J	K	L	M
1													
2	6	5	4	3	2								
3													
4	7	6	5	4	3	2							
5													
6	18	17	16	15	14	13							
7													
8	19	20	21	22	23	24							
9													
10	30	29	28	27	26	25							
11													
12	31	32	33	34	35	36							
13													

I, Glenn E. Richard, in a field survey on February 7, 1997, do hereby certify that under requirements of P.A. 74, Michigan P.A. of 1970, the corner points mentioned in lines 1 and 2 above were in conformance with regulations and rules therefore as required in the current manual of survey instructions of the United States Department of the Interior, Bureau of Land Management or by a decree of a Court of Law and/or that the corner points mentioned in lines 3, 4 and 5 above were in conformance with the rules of the Michigan Board of Land Surveyors or by a Decree of a Court of Law; established, re-established, monumented, re-monumented, recovered, found as expressed below:

NOTE: Not more than 4 corners, all in the same town and range, may be recorded on this certificate.

A. Description of original monument and accessories and/or subsequent restoration:

1815 Thomas Evans set post corner Sections 10, 11, 14 & 15 Tam 10 N 65 W 109, Tam 5 S 79 W 115  
 1815 - 1955 Couldn't find any information on this corner.  
 1955 B.L.M. did a Dependent Resurvey and partial Subdivision of Section 11.  
 "The point for the corner of Sections 10, 11, 14 & 15 falls in pond. Impossible to establish a monument."  
 Established witness corner 1.41 chains north on line between sections 10 and 11.

B. Description of corner evidence found and/or method applied in restoring or reestablishing corner:

February 7, 1997. All the witnesses to the witness corner were gone. Found the W.C. 8" under the ice in swamp by using the record distances from the 1/4 corners common to 10 and 11 and to 11 and 14. Extended the line south 93.06' (1.41 chains) from the W.C. and the 1/4 corner common to sections 10 and 11. Set 3/4" X 8" galv. pipe capped G.E.R. 13040 through the ice. Top of galv. pipe is 18" above the ice. I hit a stone and couldn't drive it any deeper.

C. Description of monument for corner and accessories established to perpetuate locating the position of the corner:

3/4" X 8" galv. pipe capped G.E.R. 13040 and is accepted as the best available evidence of the position of the original corner.

Witnesses monument on section line N 00° 12' 34" W 93.06'  
 Re-rod on section line N 89° 39' 53" W 357.05'  
 Re-rod on section line S 00° 36' 52" E 908.98'  
 1/4 corner common to sections 10 & 11 S 89° 12' 05" E 2670.15

Witnesses to witness corner.

Dbl. hd. nail & disc in 10" maple N 10° E 48.87'  
 Dbl. hd. nail & disc in 8" maple S 20° E 22.80'  
 Dbl. hd. nail & disc in 5" Tamarack East 17.52'  
 Dbl. hd. nail & disc in 5" Tamarack S 65° E 10.62'

(See back for sketch)

**SURVEY &  
 REMONUMENTATION**

AUG 25 1997

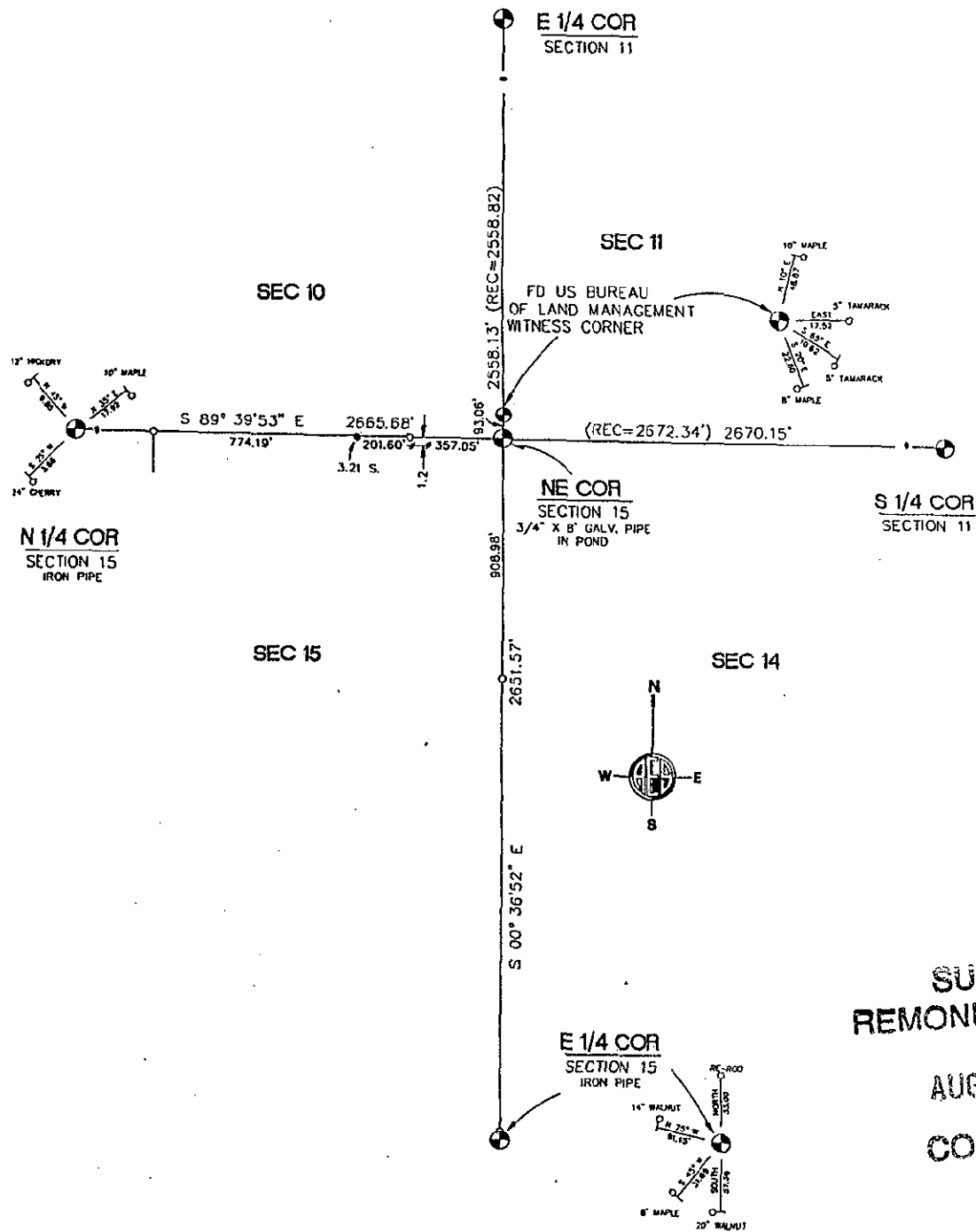
COMMISSION



Ratified by Peer Group in accordance with P.A. 345 Co. Rep. Glenn E. Richard Date 6-3-97

Signed by Glenn E. Richard Date 6-9-97  
 Glenn E. Richard

Surveyor's Michigan License No. 13040



**SURVEY & REMONUMENTATION**

**AUG 25 1997**

**COMMISSION**

- Legend**
- Iron Found
  - Set Re-rod
  - +—+— Fence