

SURVEY &  
REMONUMENTATION

OCT 21 1997

COMMISSION

Filed under Remonumentation Act 345 of 1990  
LAND CORNER RECORDATION CERTIFICATE  
Filing Requirement of Act 74, Mich. P.A. 1970

STATE OF MICHIGAN  
LENAWEE COUNTY  
FILED

For corners in

Lenawee  
(County)

Located In:

Corner Code #

9 OCT 97 3:37 P.M.

VICTORIA J. DANIELS  
REGISTER OF DEEDS

1. Public Land Survey		T - 6 - S	R - 5 - E	H - 9
		T	R	
		T	R	
		T	R	
2. Property Controlling in Section	S	T	R	
	S	T	R	
3. Miscellaneous Property in Sec	S	T	R	
	S	T	R	

Register of Deeds Stamp & File Number

4. Lot No. \_\_\_\_\_, Recorded Plat \_\_\_\_\_  
5. Private Claims \_\_\_\_\_

	A	B	C	D	E	F	G	H	I	J	K	L	M
1													
2	6	5	4	3	2	1							
3													
4	7	8	9	10	11	12							
5													
6	18	17	16	15	14	13							
7													
8	19	20	21	22	23	24							
9													
10	30	29	28	27	26	25							
11													
12	31	32	33	34	35	36							
13													

I, Glenn E. Richard, in a field survey on June 23, 1997, do hereby certify that under requirements of P.A. 74, Michigan P.A. of 1970, the corner points mentioned in lines 1 and 2 above were in conformance with regulations and rules therefore as required in the current manual of survey instructions of the United States Department of the Interior, Bureau of Land Management or by a decree of a Court of Law and/or that the corner points mentioned in lines 3, 4 and 5 above were in conformance with the rules of the Michigan Board of Land Surveyors or by a Decree of a Court of Law; established, re-established, monumented, re-monumented, recovered, found as expressed below:

NOTE: Not more than 4 corners, all in the same town and range, may be recorded on this certificate.

A. Description of original monument and accessories and/or subsequent restoration:

G.L.O. notes 1819 Joseph Fletcher D.S. "set post no bearing trees, being in wet plain"  
This corner was re-established with a stake by James Blair, county Surveyor on a survey made in Sept. 1881 using found corners at the NW cor of 27, the NE cor of 26 and the SE cor of Sec 27 and the 1/4 cor common to Sections 15 and 16? (14?)  
I re-established the corner with an iron pipe on a survey I did in August 1974 by retracing Blairs survey and recorded it in L3, P 31  
The monument was destroyed about 1990+/- when the road commission scarified the old pavement. The Road Comm. had difficulty in obtaining additional R.O.W. on the south so they could move the road south to make a six foot wide shoulder along the deep ditch which runs along the north side of the road.  
10-18-93 I dug and found the bottom 18" of the I.P. 12" deep and replaced it with a 3/4" X 3' iron pipe.

B. Description of corner evidence found and/or method applied in restoring or reestablishing corner:

June 23, 1997 I found the iron pipe 18" deep under base course of asphalt. Replaced with 3/4" X 3' iron pipe capped G.E.R. 13040 in monument box with top of monument box 1 3/4" above base course. The Lenawee Co. Rd. Comm. applied the final coat of asphalt after I was done.

C. Description of monument for corner and accessories established to perpetuate locating the position of the corner:

3/4" X 3' iron pipe capped PS 13040 in monument box and is accepted as the best available evidence of the position of the original corner.  
" X " cut on 30" CMP N 20° W 26.70  
" X " cut on 30" CMP S 35° W 32.06  
6 spike in 24" Maple S 70° W 84.55  
NW corner of Hse foundation S 30° E 75.17  
NW corner of conc bridge abutment N 75° E 192.55

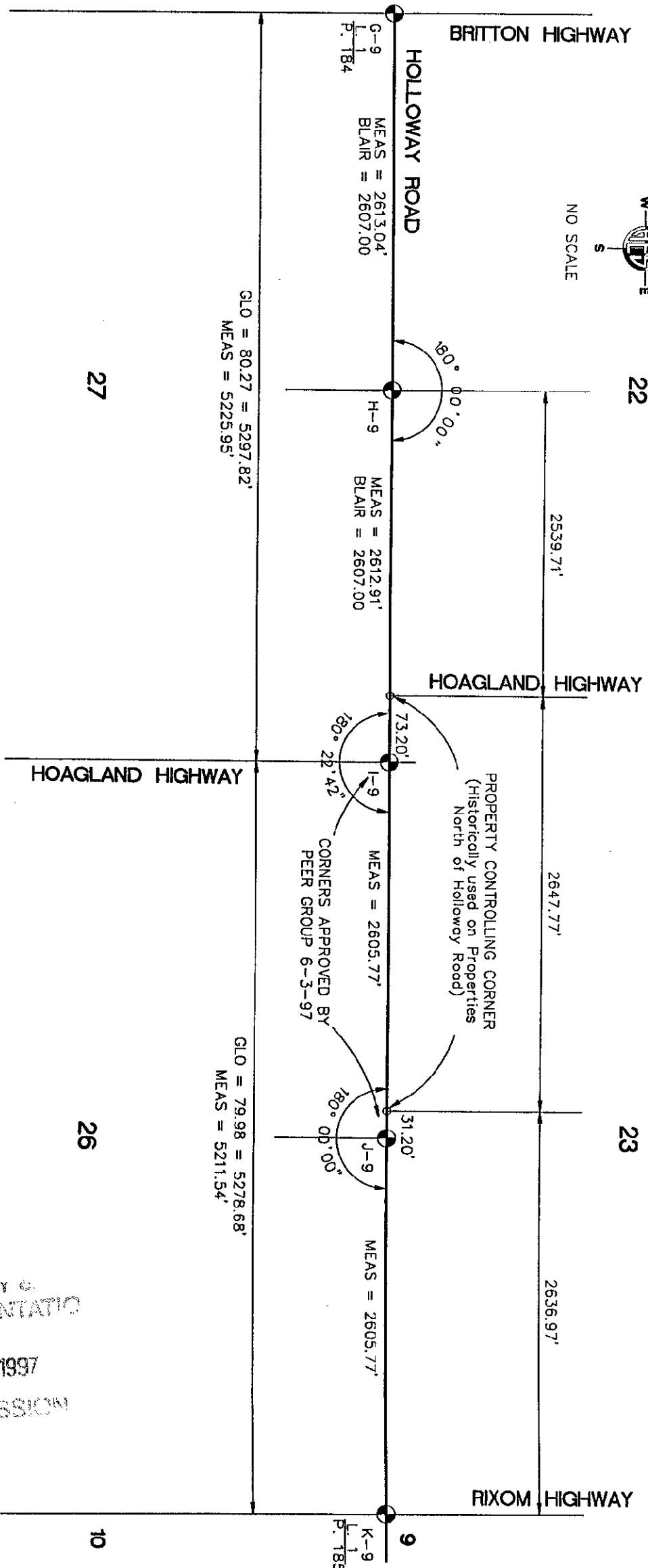
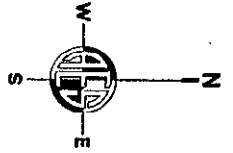
(See sketch on back)



Ratified by Peer Group in accordance with P.A. 345 Co. Rep. Glenn E. Richard Date 6-3-97

Signed by Glenn E. Richard Date 7-15-97  
Glenn E. Richard

Surveyor's Michigan License No. 13040



SURVEY &  
 REMONUMENTATIO  
 OCT 21 1997  
 COMMISSION

27

22

23

26

10

9

G-9  
L-1  
P. 184

MEAS = 2613.04'  
BLAIR = 2607.00'

H-9

MEAS = 2612.91'  
BLAIR = 2607.00'

I-9

MEAS = 2605.77'

J-9

MEAS = 2605.77'

K-9  
L-1  
P. 185

GLO = 80.27 = 5297.82'  
MEAS = 5225.95'

GLO = 79.98 = 5278.68'  
MEAS = 5211.54'

2539.71'

2647.77'

2636.97'

90° 00' 00"

180° 22' 42"

180° 00' 00"

CORNERS APPROVED BY  
PEER GROUP 6-3-97

PROPERTY CONTROLLING CORNER  
(Historically used on Properties  
North of Holloway Road)

BRITTON HIGHWAY

HOLLOWAY ROAD

HOAGLAND HIGHWAY

HOAGLAND HIGHWAY

RIXOM HIGHWAY