

REMONUMENTATION

Filed under Remonumentation Act 345 of 1990
LAND CORNER RECORDATION CERTIFICATE
Filing Requirement of Act 74, Mich. P.A. 1970

LIBER 1 PAGE 189

OCT 21 1997

COMMISSION

For corners in

Lenawee (County)

Located In:

Corner Code #

- 1. Public Land Survey T-6-S R-5-E 1-9
- 2. Property Controlling in Section S T R
- 3. Miscellaneous Property in Sec S T R

STATE OF MICHIGAN
LENAWEE COUNTY
FILED

9 OCT 97 3:37 P.M.

VICTORIA J. DANIELS
REGISTER OF DEEDS

Register of Deeds Stamp & File Number

- 4. Lot No. _____, Recorded Plat _____
- 5. Private Claims _____

I, Glenn E. Richard, in a field survey on June 30, 1997, do hereby certify that under requirements of P.A. 74, Michigan P.A. of 1970, the corner points mentioned in lines 1 and 2 above were in conformance with regulations and rules therefore as required in the current manual of survey instructions of the United States Department of the Interior, Bureau of Land Management or by a decree of a Court of Law and/or that the corner points mentioned in lines 3, 4 and 5 above were in conformance with the rules of the Michigan Board of Land Surveyors or by a Decree of a Court of Law; established, re-established, monumented, re-monumented, recovered, found as expressed below:

NOTE: Not more than 4 corners, all in the same town and range, may be recorded on this certificate.

A. Description of original monument and accessories and/or subsequent restoration:

G.L.O. notes 1819 Joseph Fletcher D.S. "set post, no bearings, wet prairie"
This corner was re-established with a stake by James Blair, County Surveyor on a survey made in Sept. 1881 using found corners at the NW cor of 27, the NE cor of 26 and the SE cor of Sec 27 and the 1/4 cor common to Sections 15 and 16? (14?)
I re-established the corner with an iron pipe on a survey I did in August 1974 by retracing Blairs survey and recorded it in L3, P 31
The Road Comm. had difficulty in obtaining additional R.O.W. on the south so they could move the road south to make a six foot wide shoulder along the deep ditch which runs along the North side of the road.
1993 Found iron pipe on south slope of deep drain but tipped to Northeast next to burrow of woodchuck.
Replaced the iron pipe with a 3/4" X 5' iron pipe by retracing the survey I had done of Sections 27 and 26.

B. Description of corner evidence found and/or method applied in restoring or reestablishing corner:

6-30-97 Replaced the 3/4" X 5' iron pipe with a 30" Harrison monument

C. Description of monument for corner and accessories established to perpetuate locating the position of the corner:

30" Harrison monument stamped P.S. 13040 and is accepted as the best available evidence of the position of the original corner.

- " X " cut on 4' CMP N 45° W 17.32
- " X " cut on 4' CMP S 20° W 56.12
- " X " cut on conc abutment N 75° W 58.34
- Survey mark spike & re-mon tag in E. P. S 65° W 112.35
- Survey mark spike & re-mon tag in E. P. S 30° E 59.46

"Property Controlling Corner" (5/8" X 30' re-rod capped G.E. R. 13040) for Sections 22 and 23 West 73.20 on line between H-9 and I-9 T6S R5E as approved by the Peer Group on June 3, 1997

(See sketch on back)

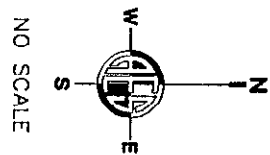
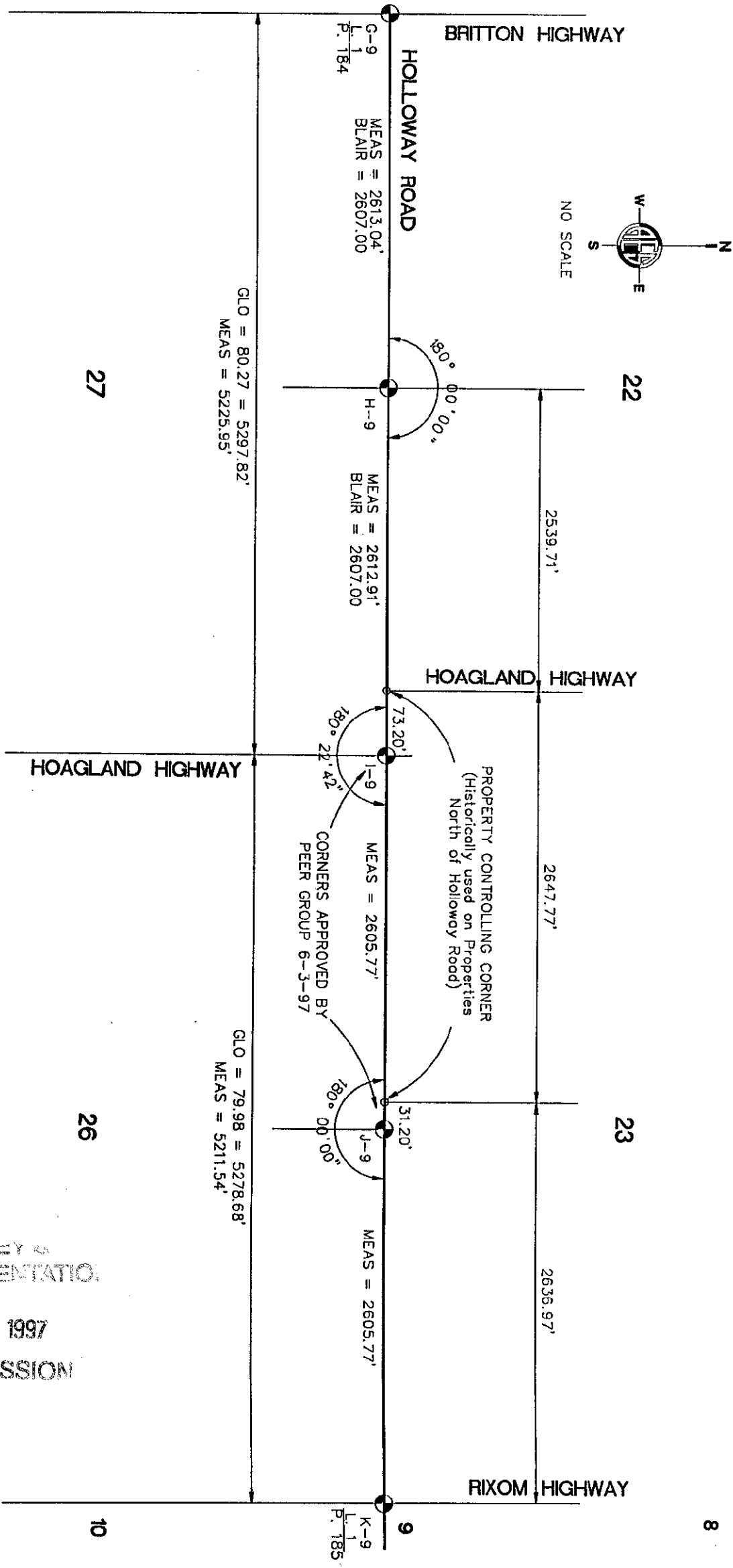
	A	B	C	D	E	F	G	H	I	J	K	L	M
1													
2	6	5	4	3	2								
3													
4	7	8	9	10	11	12							
5													
6	18	17	16	15	14	13							
7													
8	19	20	21	22	23	24							
9													
10	30	29	28	27	26	25							
11													
12	31	32	33	34	35	36							
13													



Ratified by Peer Group in accordance with P.A. 345 Co. Rep. Glenn E. Richard Date 6-3-97

Signed by Glenn E. Richard Date July 15, 1997
Glenn E. Richard

Surveyor's Michigan License No. 13040



27

22

26

23

10

9

8

SURVEY & REMONUMENTATION

OCT 21 1997

COMMISSION