

OCT 21 1997

COMMISSION

STATE OF MICHIGAN
LENAWEE COUNTY
FILED

For corners in

Lenawee (County)	Located In:	Corner Code #
1. Public Land Survey	T-6-S R-5-E	J-9
	T R	
	T R	
	T R	
	T R	
2. Property Controlling in Section	S T R	
	S T R	
3. Miscellaneous Property in Sec	S T R	
	S T R	

9 OCT 97 3:38 P.M.

VICTORIA J. DANIELS
REGISTER OF DEEDS

Register of Deeds Stamp & File Number

4. Lot No. _____, Recorded Plat _____
5. Private Claims _____

	A	B	C	D	E	F	G	H	I	J	K	L	M
1													
2	6	5	4	3	2	1							
3													
4	7	8	9	10	11	12							
5													
6	18	17	16	15	14	13							
7													
8	19	20	21	22	23	24							
9													
10	30	29	28	27	26	25							
11													
12	31	32	33	34	35	36							
13													

I, Glenn E. Richard, in a field survey on June 23, 19 97, do hereby certify that under requirements of P.A. 74, Michigan P.A. of 1970, the corner points mentioned in lines 1 and 2 above were in conformance with regulations and rules therefore as required in the current manual of survey instructions of the United States Department of the Interior, Bureau of Land Management or by a decree of a Court of Law and/or that the corner points mentioned in lines 3, 4 and 5 above were in conformance with the rules of the Michigan Board of Land Surveyors or by a Decree of a Court of Law; established, re-established, monumented, re-monumented, recovered, found as expressed below:

NOTE: Not more than 4 corners, all in the same town and range, may be recorded on this certificate.

A. Description of original monument and accessories and/or subsequent restoration:

G.L.O. notes 1819 Joseph Fletcher D.S. "set post, no bearings"
This corner was re-established by James Blair, county Surveyor on a survey made in Sept. 1881, but was never monumented.
I re-established the corner with an iron pipe on a survey I did in August 1974 by retracing Blair's survey and recorded it in L3, P 31
The pavement was scarified about 1990
11-6-93 Dug and found the bottom 12" of the iron pipe and replaced it with a 3/4" X 3' iron pipe.

B. Description of corner evidence found and/or method applied in restoring or reestablishing corner:

June 23, 1997 The iron pipe I set 11-6-93 was gone. I set a 3/4" X 3' iron pipe capped G.E.R. 13040 in monument box on line and midway between I and L-9 just like Blair did in 1881 and I did in 1974.

C. Description of monument for corner and accessories established to perpetuate locating the position of the corner:

3/4" X 3' iron pipe capped PS 13040 in monument box and is accepted as the best available evidence of the position of the original corner.

Found nail & washer in face of Elec pole S 75° W 126.94
Dbl hd nail & disc in Elec pole S 80° E 250.34
" X " cut on 12" CMP N 70° W 55.37
" X " cut on 12" CMP N 60° W 37.30
SW corner of house foundation N 75° W 247.17
SE corner of house foundation N 70° W 198.63

Property Controlling Corner (5/8" X 2' re-rod capped G.E.R. 13040 in pavement) for Section 23 West 31.20 on line between I-9 and J-9 T6S R5E as approved by the Peer Group on June 3, 1997.

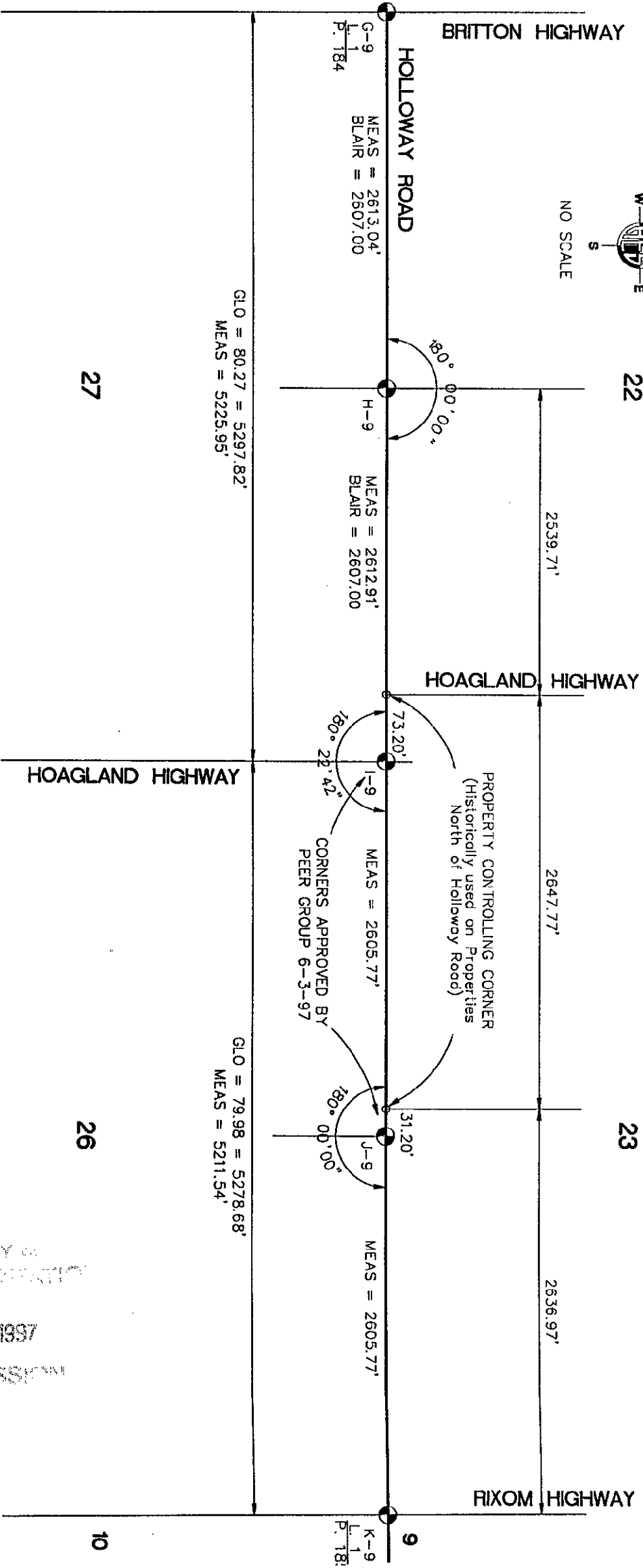
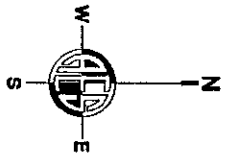
(See sketch on back)



Ratified by Peer Group in accordance with P.A. 345 Co. Rep. Glenn E. Richard Date 6-3-97

Signed by Glenn E. Richard Date July 15, 1997
Glenn E. Richard

Surveyor's Michigan License No. 13040



SURVEY OF
REMONUMENTATION

OCT 21 1997

COMMISSION