

NOV 1995

COMMISSION

Filed under Remonumentation Act 345 of 1990

LAND CORNER RECORDATION CERTIFICATE

Filing Requirement of Act 74, Mich. P.A. 1970

LIBER 001 PAGE 65

For corners in

Lenawee (County)

Located In:

Corner Code #

- 1. Public Land Survey T-8-S R-3-E E-5
2. Property Controlling in Section S-T-R
3. Miscellaneous Property in Sec. S-T-R

- 4. Lot No. Recorded Plat
5. Private Claims

I, Glenn E. Richard, in a field survey on September 2, 1994, do hereby certify that under requirements of P.A. 74, Michigan P.A. of 1970, the corner points mentioned in lines 1 and 2 above were in conformance with regulations and rules therefore as required in the current manual of survey instructions of the United States Department of the Interior, Bureau of Land Management or by a decree of a Court of Law and/or that the corner points mentioned in lines 3, 4 and 5 above were in conformance with the rules of the Michigan Board of Land Surveyors or by a Decree of a Court of Law; established, re-established, monumented, re-monumented, recovered, found as expressed below:

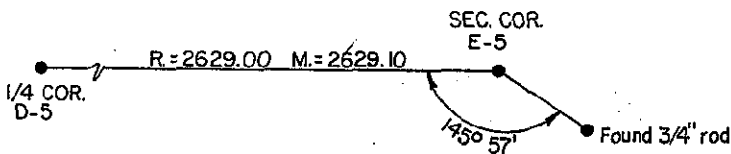
NOTE: Not more than 4 corners, all in the same town and range, may be recorded on this certificate.

A. Description of original monument and accessories and/or subsequent restoration:

G.L.O. March 1824, John Mullett set post corner Sections 8, 9, 16 & 17, B. Ash 12 N 82 E 46, Elm 7 S 72 W 10 April 1940, Harold Clegg, R.L.S. 13578, shows the corner on his notes of a survey of Packard Road, but doesn't describe the monument of if it was found or re-established. January 4, 1972, The culvert that ran diagonally through the intersection (as shown on the road survey) had been removed and any evidence of the corner was destroyed, I re-established the corner with a 1" X 24" iron pipe by retracing the 1940 road survey and recorded it in L. 1, P. 147, dbl. hd. nail & disc in brace pole S 50° E 58.62. This corner is the southeast corner of the Plat of Jafet Acres as recorded in L. 17, P, 56 & 57. I recorded it again in L.4, P. 288, dbl. hd. nail & disc in brace pole S 50° E58.62, dbl. hd. nail & disc in elec. pole S 20° W 66.73, dbl. hd. nail & disc in elec. pole N 50° E 53.13.

B. Description of corner evidence found and/or method applied in restoring or reestablishing corner:

September 2, 1994, Found 1" iron pipe 3" deep under new asphalt cap. and found 3/4" iron rod 11.53 Southeast. December 8, 1994, set 3/4" X 3" iron pipe capped P.S. 13040 in monument box.



C. Description of monument for corner and accessories established to perpetuate locating the position of the corner:

3/4" X 3" iron pipe capped P.S. 13040 in monument box and is accepted as the best available evidence of the position of the original corner. Fd. dbl. hd. nail & disc in SW. face of brace pole S 50° E 58.56 Fd. dbl. hd. nail & disc in SE. face of elec. pole S 20° W 66.67 Fd. dbl. hd. nail & disc in NW. face of elec. pole S 50° E 53.08 Cut "X" on top of C.B. N 45° W 38.58 NW. corner concrete wing wall N 85° E 183.61 SW. corner of concrete wing wall S 80° E 184.80



Ratified by Peer Group in accordance with P.A. 345 Signed by Glenn E. Richard Glenn E. Richard

Co. Rep. Glenn E. Richard Date November 17, 1994 Date Dec 21, 1994

Surveyor's Michigan License No. 13040

Register of Deeds Stamp & File Number grid with columns A-M and rows 1-13. A dot is present in cell (5, G).

FILED MAR 14 1995 3:19 P.M. LENAWEE COUNTY JEANETTE D. KNOX REGISTER OF DEEDS