

SURVEY & REMONUMENTATION

OCT 19 1998

SECTION

Filed under Remonumentation Act 345 of 1990
LAND CORNER RECORDATION CERTIFICATE
 Filing Requirement of Act 74, Mich. P.A. 1970

LIBER 1 PAGE 274
 STATE OF MICHIGAN
 LENAWEE COUNTY
 FILED

25 SEP 1998 1:11:04 PM

VICTORIA J. DANIELS
 REGISTER OF DEEDS

Register of Deeds Stamp & File Number

For corners in			
<u>Lenawee</u>	Located In:	Corner Code #	
(County)			
1. Public Land Survey	T - 8-S R - 3-E	M-2	
	T R		
	T R		
	T R		
2. Property Controlling in Section	S T R		
	S T R		
3. Miscellaneous Property in Sec	S T R		
	S T R		

4. Lot No. _____, Recorded Plat _____
 5. Private Claims _____

I, Glenn E. Richard, in a field survey on July 9, 1998, do hereby certify that under requirements of P.A. 74, Michigan P.A. of 1970, the corner points mentioned in lines 1 and 2 above were in conformance with regulations and rules therefore as required in the current manual of survey instructions of the United States Department of the Interior, Bureau of Land Management or by a decree of a Court of Law and/or that the corner points mentioned in lines 3, 4 and 5 above were in conformance with the rules of the Michigan Board of Land Surveyors or by a Decree of a Court of Law; established, re-established, monumented, re-monumented, recovered, found as expressed below:

NOTE: Not more than 4 corners, all in the same town and range, may be recorded on this certificate.

	A	B	C	D	E	F	G	H	I	J	K	L	M
1													
2	6	5	4	3	2								
3													
4	7	8	9	10	11	12							
5													
6	18	17	16	15	14	13							
7													
8	19	20	21	22	23	24							
9													
10	30	29	28	27	26	25							
11													
12	31	32	33	34	35	36							
13													

A. Description of original monument and accessories and/or subsequent restoration:

NOTE: SEE COMMENTS & SKETCH ON BACK

G.L.O. 1824 John Mullett ran a corrected town line from the south and set 1/4 post 5.4 chains north of the old section corner by Joseph Wampler Beech 14 S 65 W 23 Sugar 8 N 34 W 34
 Couldn't find any information about this corner in Blair's or J.L. Richard's records
 1971 I set a temporary point to sight to by proportioning distances between occupied lines from the south.
 1974 Werner Sommer adjusted the point 6.8 east to be on line between the S.E. and N.E. corners of Section 1 and recorded it in L 2 P 643.
 1995 Lenawee County Road Commission started reconstruction of Treat Hwy.

B. Description of corner evidence found and/or method applied in restoring or reestablishing corner:

July 9, 1998 The corner recorded in L 2, P 643 was gone. I set a 5/8" X 3' re-rod on line between M-1 and M-3 T8S R3E using the remaining witnesses recorded on L 2, P 643.
 Aug. 24, 1998 Set monument box in base course of new asphalt pavement

C. Description of monument for corner and accessories established to perpetuate locating the position of the corner:

5/8" X 3' re-rod with Lenawee County re-mon cap stamped P.S. 13040 in a monument box and is accepted as the best available evidence of the position of the original corner.

NW corner of brick house S 50° E 131.73
 Fd P.K. in west face of E.P. S 20° E 65.63
 Fd P.K. in east face of E.P. S 35° W 57.97
 "X" cut on west side of gas line marker post N 10° E 67.75

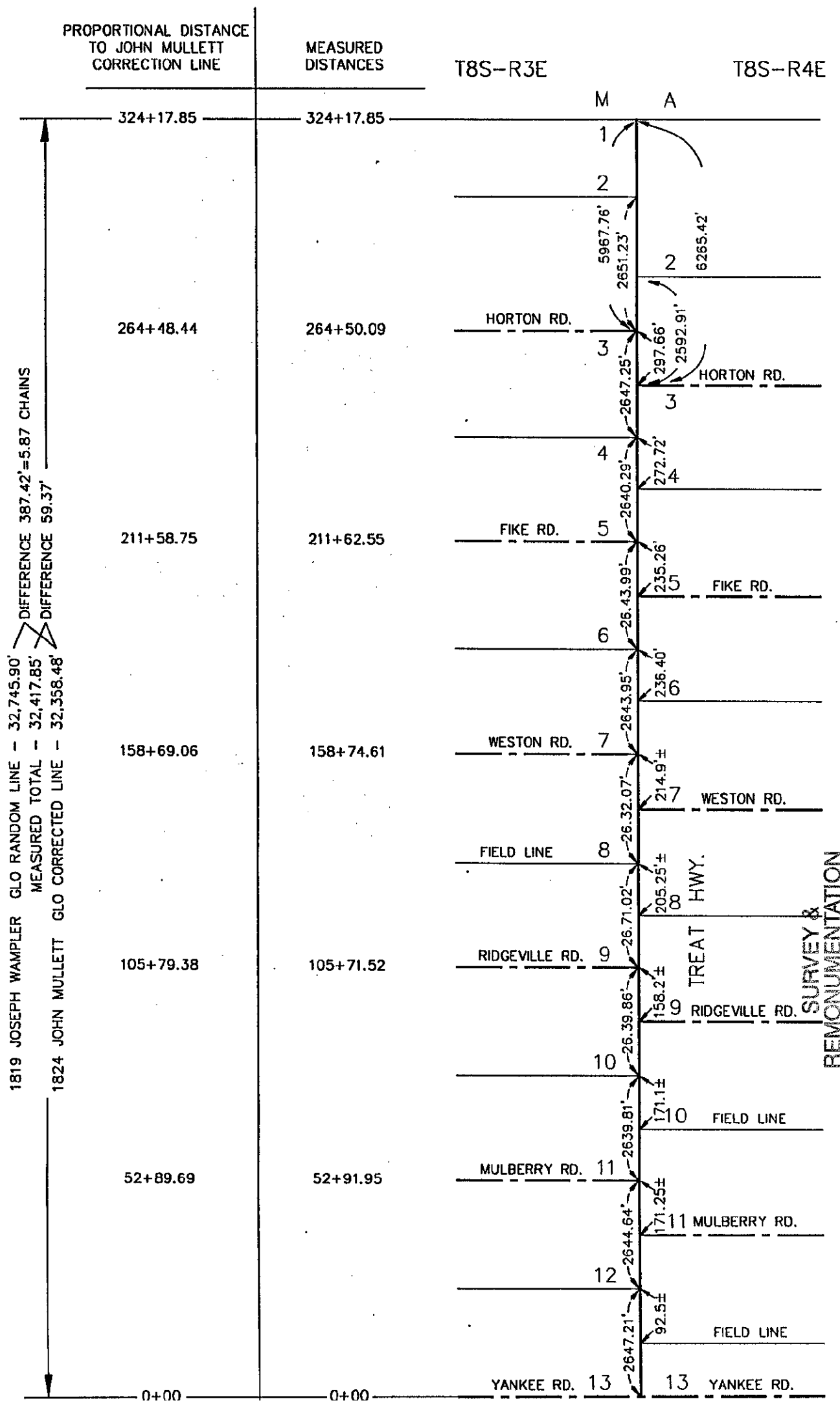
A-2 T8S R4E South 355.97
 Centerline of pavement to the west South 11'±



Ratified by Peer Group in accordance with P.A. 345 Co. Rep. Glenn E. Richard Date September 22, 1998
 Signed by Glenn E. Richard Date Sept. 24, 1998
 Glenn E. Richard
 Surveyor's Michigan License No. 13040

COMMENTS: The G.L.O. Plat maps for T8S-R3E are in conflict as to the jogs of the section lines. 1819, Joseph Wampler surveyed the township line from North to South, apparently making an error of approximately 5 chains as he shows the last distance to be 96.15 chains and corrected all temporary corners 16.15 chains South. 1824, John Mullett re-surveyed and corrected this line surveying from South to North, calling out old corners and setting new corners at 40 chain intervals and shows that last distance as 90.28 chains for a difference of 5.87 chains.

James Blair's 1880± records of each section show the jogs to be to the corrected corners set by John Mullett. The current occupation of roads and the present monumentation of corners and the measurement of the east line of township fit reasonably well with John Mullett re-survey of the line.



OCT 19 1998

SECTION