

MAY 16 1997

COMMISSION

Filed under Remonumentation Act 345 of 1990

LAND CORNER RECORDATION CERTIFICATE

Filing Requirement of Act 74, Mich. P.A. 1970

STATE OF MICHIGAN
LENAWEE COUNTY
FILED

20 DEC 96 10:53 A.M.

JEANETTE D. KNOX
REGISTER OF DEEDS

For corners in

Lenawee

(County)

Located In:

Corner Code #

- 1. Public Land Survey T - 8-S R - 3 - E M-5
T _____ R _____
T _____ R _____
T _____ R _____
- 2. Property Controlling S _____ T _____ R _____
in Section S _____ T _____ R _____
- 3. Miscellaneous S _____ T _____ R _____
Property in Sec S _____ T _____ R _____

Register of Deeds Stamp & File Number

- 4. Lot No. _____ Recorded Plat _____
- 5. Private Claims _____

	A	B	C	D	E	F	G	H	I	J	K	L	M
1													
2	6	5	4	3	2	1							
3													
4	7	8	9	10	11	12							
5													
6	18	17	16	15	14	13							
7													
8	19	20	21	22	23	24							
9													
10	30	29	28	27	26	25							
11													
12	31	32	33	34	35	36							
13													

I, Glenn E. Richard, in a field survey on September 9 19 96, do hereby certify that under requirements of P.A. 74, Michigan P.A. of 1970, the corner points mentioned in lines 1 and 2 above were in conformance with regulations and rules therefore as required in the current manual of survey instructions of the United States Department of the Interior, Bureau of Land Management or by a decree of a Court of Law and/or that the corner points mentioned in lines 3, 4 and 5 above were in conformance with the rules of the Michigan Board of Land Surveyors or by a Decree of a Court of Law; established, re-established, monumented, re-monumented, recovered, found as expressed below:

NOTE: Not more than 4 corners, all in the same town and range, may be recorded on this certificate.

A. Description of original monument and accessories and/or subsequent restoration:

***NOTE: SEE COMMENTS & SKETCH ON BACK**

G.L.O. 1824 John Mullett ran a corrected town line from the South and set post corner of Sections 12 & 13, 4.7 chains North of old corner Sections 12 & 13. Sycamore 14 N 34° W 16, W. Ash 9 S 65° W 14. Could not find any records of anyone finding this corner or re-establishing it. Feb. 1968, I dug and found an iron pipe 12" deep raised with an iron pipe. May 1972, Walter Frazier and Assoc. used the iron pipe. July 1972, Werner Sommer found the iron pipe and recorded it in L. 2, P. 187. May 1974, Walter Frazier & Assoc. used the iron pipe.

B. Description of corner evidence found and/or method applied in restoring or reestablishing corner:

September 4, 1996, I found a 1/2" X 12" iron pipe in top of 1 1/4" X 24" iron pipe, bricks and remains of wood stake. Replaced the found iron pipes with a 3/4" X 3" gas pipe capped G.E.R. 13040. September 9, 1996, I found the gas pipe under the first course of asphalt and set monument box with top 1 3/4" above the pavement to be level with the top course of asphalt being laid by the Lenawee County Road Commission.

C. Description of monument for corner and accessories established to perpetuate locating the position of the corner:

3/4" X 3" gas pipe capped G.E.R. 13040 in monument box and is accepted as the best available evidence of the position of the original corner.
 Fd. nail & disc in N. face of Elec. pole S 65° W 59.27
 Fd. nail & disc in S. face of post next to telephone pedestal N 45° E 42.59
 Fd. dbl. hd. nail & disc in W. face of Elec. pole S 10° E 186.75
 Fd. dbl. hd. nail & disc in E. face of Elec. pole S 45° W 39.12
 "X" Cut on N. end of C.M.P. N 40° W 29.60
 3/4" X 3" gas pipe in monument box at A-5, T8S-R4E, South 255.26

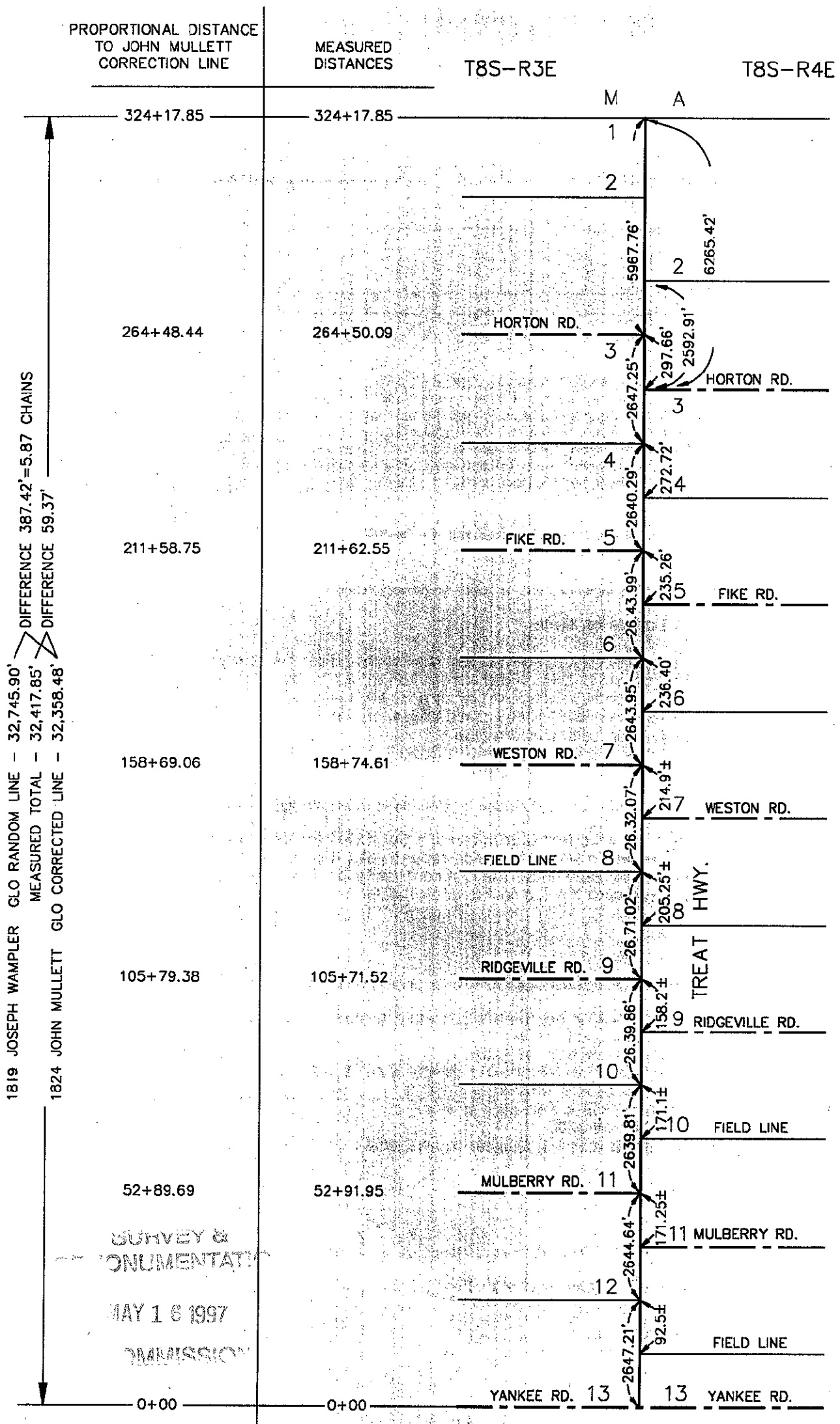


Ratified by Peer Group in accordance with P.A. 345 Co. Rep. Glenn E. Richard Date 12-16-1996

Signed by Glenn E. Richard Date 12-19-96
 Glenn E. Richard

Surveyor's Michigan License No. 13040

COMMENTS: The G.L.O. Plat maps for T8S-R3E and T8S-R4E are in conflict as to the jogs of the section lines. 1819, Joseph Wampler surveyed the township line from North to South, apparently making an error of approximately 5 chains as he shows the last distance to be 96.15 chains and corrected all temporary corners 16.15 chains South. 1824, John Mullett re-surveyed and corrected this line surveying from South to North, calling out old corners and setting new corners at 40 chain intervals and shows the last distance as 90.28 chains for a difference of 5.87 chains. James Blair's 1880± records of each section show the jogs to be to the corrected corners set by John Mullett. The current occupation of roads and the present monumentation of corners and the measurement of the east line of township fit reasonably well with John Mullett re-survey of the line.



SURVEY & MONUMENTATION
MAY 16 1997
COMMISSION

1819 JOSEPH WAMPLER GLO RANDOM LINE - 32,745.90'
MEASURED TOTAL - 32,417.85'
DIFFERENCE 387.42' = 5.87 CHAINS
1824 JOHN MULLETT GLO CORRECTED LINE - 32,358.48'
DIFFERENCE 59.37'