

OCT 19 1998

SECTION

Filed under Remonumentation Act 345 of 1990
LAND CORNER RECORDATION CERTIFICATE
Filing Requirement of Act 74, Mich. P.A. 1970

LIBER 1 PAGE 275

STATE OF MICHIGAN
LENAWEE COUNTY
FILED

25 SEP 1998 1:11:25 PM

VICTORIA J. DANIELS
REGISTER OF DEEDS

For corners in
Lenawee Located In: Corner Code #
(County)

1. Public Land Survey T - 8 - S R - 4 - E A-2
T R
T R
T R

2. Property Controlling in Section S T R
S T R

3. Miscellaneous Property in Sec S T R
S T R

Register of Deeds Stamp & File Number

4. Lot No. _____, Recorded Plat _____
5. Private Claims _____

I, Glenn E. Richard, in a field survey on July 9, 1998, do hereby certify that under requirements of P.A. 74, Michigan P.A. of 1970, the corner points mentioned in lines 1 and 2 above were in conformance with regulations and rules therefore as required in the current manual of survey instructions of the United States Department of the Interior, Bureau of Land Management or by a decree of a Court of Law and/or that the corner points mentioned in lines 3, 4 and 5 above were in conformance with the rules of the Michigan Board of Land Surveyors or by a Decree of a Court of Law; established, re-established, monumented, re-monumented, recovered, found as expressed below:

NOTE: Not more than 4 corners, all in the same town and range, may be recorded on this certificate.

A. Description of original monument and accessories and/or subsequent restoration:

NOTE: SEE COMMENTS & SKETCH ON BACK

This position not established by original government surveyors
1852 George Crane (Lenawee County Surveyor) took up the North 1/2 of Section 6 with 4 patents. I believe he surveyed the North 1/2 of Section 6 and prepared the descriptions
1913 J.L. Richard measured the north part of the NW 1/4 of Sec. 6
1976 I did extensive research of the deeds of Section 6. I was doing a survey in the NE 1/4 and tied in the occupation lines in the north half of Section 6. The deeds in the north half fit reasonably well with the occupied lines for the east and west 1/4 line.

B. Description of corner evidence found and/or method applied in restoring or reestablishing corner:

July 9, 1998 I set a 5/8" X 3' re-rod on line between M-1 and M-3 T8S R3E at the distance (2592.91') north from the SW corner of Section 6 that I had computed for the survey I did in 1976 of the NE 1/4 of Section 6
Aug 24, 1998 set mon box

C. Description of monument for corner and accessories established to perpetuate locating the position of the corner:

5/8" X 3' re-rod with a Lenawee County re-mon cap stamped P.S. 13040 in a monument box. This position not established by original government surveyors. This monument is accepted as the best available evidence of the position of the corner.

NW corner of house foundation N 35° E 148.09
SW corner of house foundation N 65° E 88.73
P.K. nail in face of concrete post East 25.94
West face of steel post East 154.68

M-2 T8S R3E North 355.97

	A	B	C	D	E	F	G	H	I	J	K	L	M
1													
2	6	5	4	3	2								
3													
4	7	8	9	10	11	12							
5													
6	18	17	16	15	14	13							
7													
8	19	20	21	22	23	24							
9													
10	30	29	28	27	26	25							
11													
12	31	32	33	34	35	36							
13													



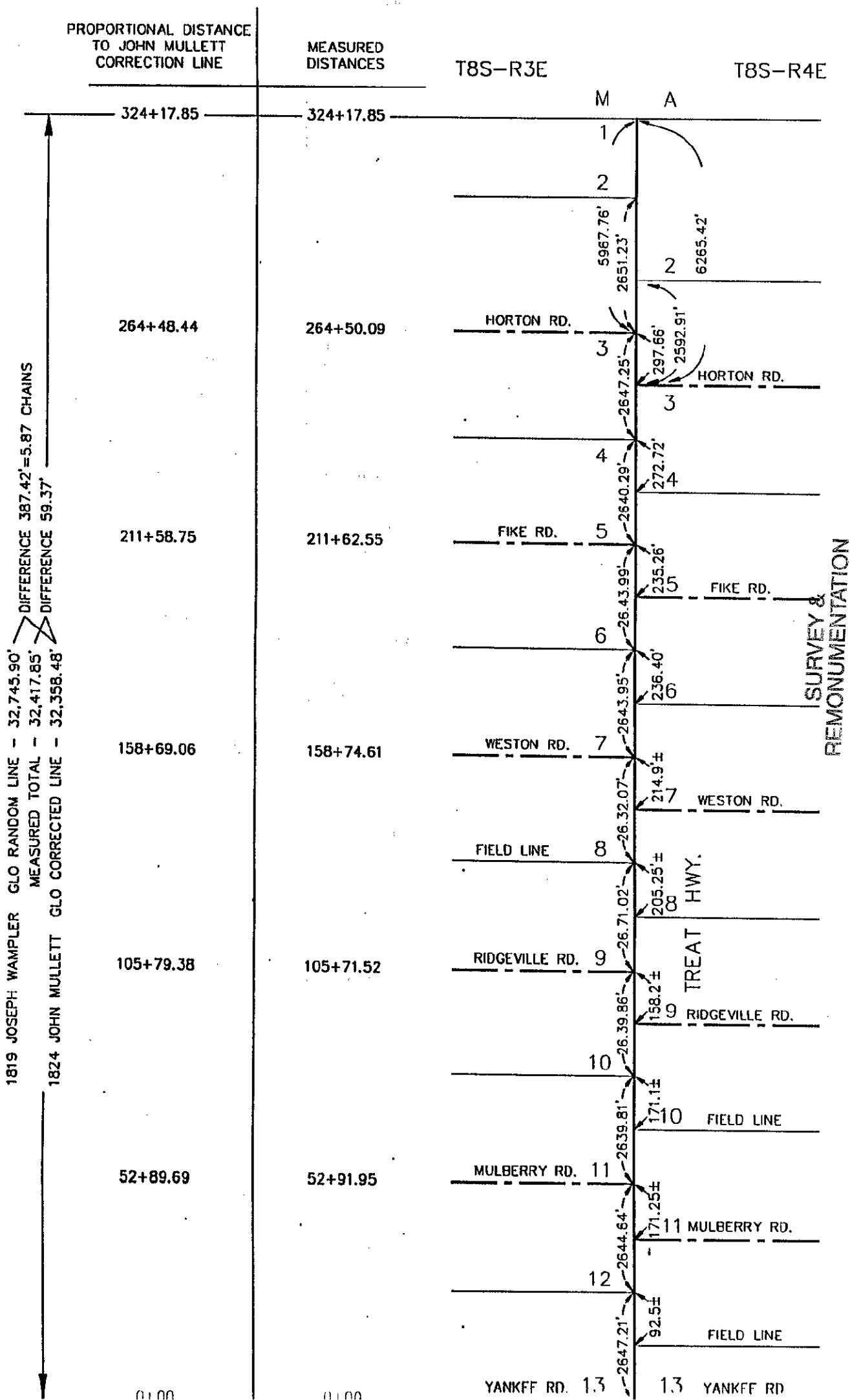
Ratified by Peer Group in accordance with P.A. 345 Co. Rep. Glenn E. Richard Date September 22, 1998

Signed by Glenn E. Richard Date Sept 24, 1998
Glenn E. Richard

Surveyor's Michigan License No. 13040

COMMENTS: The G.L.O. Plot maps for T8S-R3E are in conflict as to the jogs of the section lines. 1819, Joseph Wampler surveyed the township line from North to South, apparently making an error of approximately 5 chains as he shows the last distance to be 96.15 chains and corrected all temporary corners 16.15 chains South. 1824, John Mullett re-surveyed and corrected this line surveying from South to North, calling out old corners and setting new corners at 40 chain intervals and shows that last distance as 90.28 chains for a difference of 5.87 chains.

James Blair's 1880± records of each section show the jogs to be to the corrected corners set by John Mullett. The current occupation of roads and the present monumentation of corners and the measurement of the east line of township fit reasonably well with John Mullett re-survey of the line.



SURVEY & REMONUMENTATION

OCT 19 1998

SECTION