

**SURVEY & REMONUMENTATION**

**OCT 19 1998**

**SECTION**

Filed under Remonumentation Act 345 of 1990  
**LAND CORNER RECORDATION CERTIFICATE**  
 Filing Requirement of Act 74, Mich. P.A. 1970

**LIBER 1 PAGE 265**

For corners in

<u>Lenawee</u> (County)	Located In:	Corner Code #
1. Public Land Survey	T - 8-S R - 5 - E	<u>A-8</u>
	T _____ R _____	_____
	T _____ R _____	_____
	T _____ R _____	_____
2. Property Controlling in Section	S _____ T _____ R _____	_____
	S _____ T _____ R _____	_____
3. Miscellaneous Property in Sec	S _____ T _____ R _____	_____
	S _____ T _____ R _____	_____

STATE OF MICHIGAN  
 LENAWEE COUNTY  
 FILED

15 SEP 1998 9:03:25 AM

VICTORIA J. DANIELS  
 Register of Deeds State of Michigan

4. Lot No. \_\_\_\_\_, Recorded Plat \_\_\_\_\_  
 5. Private Claims \_\_\_\_\_

	A	B	C	D	E	F	G	H	I	J	K	L	M
1													
2	6	5	4	3	2	1							
3													
4	7	8	9	10	11	12							
5													
6	13	17	16	15	14	13							
7													
8	19	20	21	22	23	24							
9													
10	30	29	28	27	26	25							
11													
12	31	32	33	34	35	36							
13													

I, Glenn E. Richard, in a field survey on August 14, 1998, do hereby certify that under requirements of P.A. 74, Michigan P.A. of 1970, the corner points mentioned in lines 1 and 2 above were in conformance with regulations and rules therefore as required in the current manual of survey instructions of the United States Department of the Interior, Bureau of Land Management or by a decree of a Court of Law and/or that the corner points mentioned in lines 3, 4 and 5 above were in conformance with the rules of the Michigan Board of Land Surveyors or by a Decree of a Court of Law; established, re-established, monumented, re-monumented, recovered, found as expressed below:

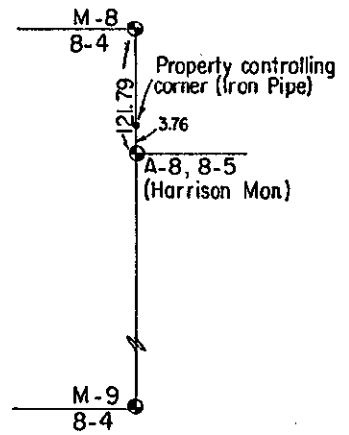
**NOTE: Not more than 4 corners, all in the same town and range, may be recorded on this certificate.**

**A. Description of original monument and accessories and/or subsequent restoration:**

This position not established by original government surveyors  
 1880 James Blair re-established the corner by setting a stake midway between the corners he found at A-7 and A-9 T8S R5E  
 1975 AES dug but didn't find anything. Set iron pipe at Blair's record distance north from the found R.R. spike at the SW corner of Section 19 and I recorded it in L 3 P 159

**B. Description of corner evidence found and/or method applied in restoring or reestablishing corner:**

Aug. 14, 1998 Set 30" Harrison monument stamped P.S. 13040 at west edge of pavement at the peer group approved location 3.76 South of iron pipe recorded in L 3, P 159. The corner established in 1975 and recorded in L3 P 159 will be utilized as a property controlling corner for surveys tied to it.



**C. Description of monument for corner and accessories established to perpetuate locating the position of the corner:**

30" Harrison monument stamped P.S. 13040 and is accepted as the best available evidence of the position of the original corner.

- "X" cut on steel culvert N 10° W 97.92
- "X" cut on steel culvert N 5° W 121.02
- Fd dbl hd nail & disc in E.P. N 43° 26' 57" E 45.35
- NW corner of house foundation S 35° E 142.45

M-8 T8S R4E North 121.79



Ratified by Peer Group in accordance with P.A. 345 Co. Rep. Glenn E. Richard Date July 21, 1998

Signed by Glenn E. Richard Date Sept. 14, 1998  
 Glenn E. Richard

Surveyor's Michigan License No. 13040