

**SURVEY & REMONUMENTATION**

NOV 07 1994

COMMISSION

Filed under Remonumentation Act 345 of 1990

LAND CORNER RECORDATION CERTIFICATE

Filing Requirement of Act 74, Mich. P.A. 1970

LIBER 001 PAGE 11

For corners in

Lenawee Located In: \_\_\_\_\_ Corner Code # \_\_\_\_\_  
 (County)

1. Public Land Survey T-8-S R-5-E K-1  
 T. \_\_\_\_\_ R. \_\_\_\_\_  
 T. \_\_\_\_\_ R. \_\_\_\_\_  
 T. \_\_\_\_\_ R. \_\_\_\_\_

2. Property Controlling S. \_\_\_\_\_ T. \_\_\_\_\_ R. \_\_\_\_\_  
 in Section S. \_\_\_\_\_ T. \_\_\_\_\_ R. \_\_\_\_\_

3. Miscellaneous S. \_\_\_\_\_ T. \_\_\_\_\_ R. \_\_\_\_\_  
 Property in Sec. S. \_\_\_\_\_ T. \_\_\_\_\_ R. \_\_\_\_\_

**FILED** 2:59 P.M.  
**OCT 10 1994**  
 LENAWEE COUNTY  
 JEANETTE D. KNOX  
 REGISTER OF DEEDS  
 Register of Deeds Stamp & File Number

4. Lot No. \_\_\_\_\_, Recorded Plat \_\_\_\_\_  
 5. Private Claims \_\_\_\_\_

	A	B	C	D	E	F	G	H	I	J	K	L	M
1													
2	6	5	4	3	2	1							
3													
4	7	8	9	10	11	12							
5													
6	18	17	16	15	14	13							
7													
8	19	20	21	22	23	24							
9													
10	30	29	28	27	26	25							
11													
12	31	32	33	34	35	36							
13													

I, Glenn E. Richard, in a field survey on August 30 1994, do hereby certify that under requirements of P.A. 74, Michigan P.A. of 1970, the corner points mentioned in lines 1 and 2 above were in conformance with regulations and rules therefore as required in the current manual of survey instructions of the United States Department of the Interior, Bureau of Land Management or by a decree of a Court of Law and/or that the corner points mentioned in lines 3, 4 and 5 above were in conformance with the rules of the Michigan Board of Land Surveyors or by a Decree of a Court of Law; established, re-established, monumented, re-monumented, recovered, found as expressed below:

NOTE: Not more than 4 corners, all in the same town and range, may be recorded on this certificate.

A. Description of original monument and accessories and/or subsequent restoration:

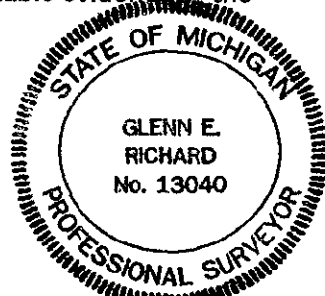
G.L.O. 1820, Joseph Wampler set post 114 links E of post, R. Oak 25 N 70E 10, Ash 5 N 34 W 7 November 1885, James Blair surveyed Sec 1 and described the corner as large stone. March 1958, I dug and found the large stone and set 1/2" X 6" iron pin. June 1984, I recorded the corner in L. 5, P. 134, but used an iron rod found 4.23 East and 1.39 North of the stone. August 30, 1994, I dug through the pavement and found 1/2" X 6" iron pin over the large stone and drilled a hole in the stone and cemented in 3/4" threaded rod. Set P.K. nail in pavement on south line of Sec 36, T7S-R5E, 1.90 North of the stone on extension of line from 1/4 corner to the south and the stone.

B. Description of corner evidence found and/or method applied in restoring or reestablishing corner:

NOTE: The 3/4" iron pipe recorded in L.5, P. 134 was set using the wrong found iron rod and was rejected by the peer group.  
 Set 3/4" iron pipe in monument box 1.90 North of the stone to be on the south line of Section 36, T7S-R5E.  
 See Sketch on back.

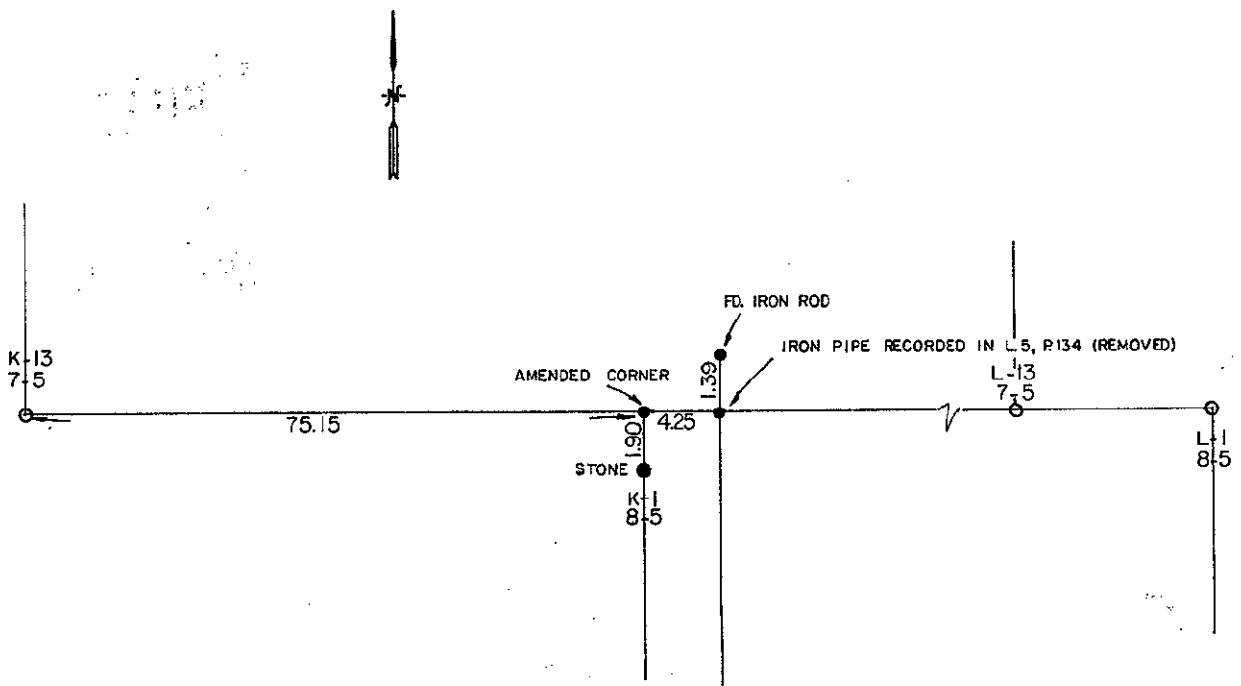
C. Description of monument for corner and accessories established to perpetuate locating the position of the corner:

3/4" X 3' iron pipe capped P.S. 13040 in monument box and is accepted as the best available evidence of the position of the original corner.  
 "X" Cut on C.M.P. N 70° W 87.74  
 "X" Cut on C.M.P. S 60° W 40.70  
 Dbl. hd. nail & disc in base of Old Elec Pole N 35° E 40.96  
 NW Cor of SW wingwall of original bridge (Only one left) S 85° W 103.22  
 NE Cor of house foundation S 65° E 126.58  
 NW Cor of house foundation S 40° E 100.61  
 SW Cor, sec. 36, West 75.15



Ratified by Peer Group in accordance with P.A. 345 Co. Rep. Glenn E. Richard Date 9-15-94  
 Signed by Glenn E. Richard Date Oct 10, 1994

Glenn E. Richard  
 Surveyor's Michigan License No. 13040



SURVEY &  
REMONUMENTATION

NOV 07 1994

COMMISSION