

MICHIGAN
DEPARTMENT OF CONSERVATION
FORESTRY DIVISION

LAND CORNER RECORD

T. 145 N.R. 93

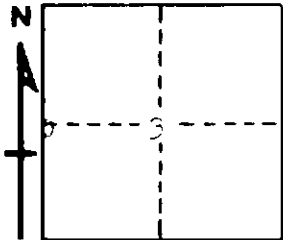
 Twp. COUNTY

DESCRIPTION OF CORNER 1/4 Corner between Secs. 1 3-4

CORNER MONUMENT 2" 1/2" x 1/2" 4" Aluminum Cap

DATE MONUMENT PLACED AND WITNESSED 10/19/63 with Ed Robert, Assistant Forester

WITNESSES TO CORNER..... 12" Cedar (1/2" dia) 26°W 22 L.F.



6" Cedar (1/2" dia) S63°E 20 L.F.

AND

CIRCLE CORNER REGISTERED

DESCRIPTION IN DETAIL AS TO HOW CORNER WAS LOCATED AND IDENTIFIED OR RESTORED.

This corner was located from one corner of S. 1. bearing 190° 44' 10" in excellent condition and a corner of S. 4. bearing 346° 0' 0" 0.11' with no remaining marks. Found Wood Post's mark. Corner found by Ed Robert.

SURVEYOR'S SEAL

SIGNED Billy D. Buckles DATE 10/19/63
REGISTERED LAND SURVEYOR