

SURVEY & REMONUMENTATION

LUCE COUNTY REMONUMENTATION CORNER

APR 28 1995

LAND CORNER RECORDATION CERTIFICATE
Filing Requirement of Act 74, Mich. P.A. 1970

COMMISSION

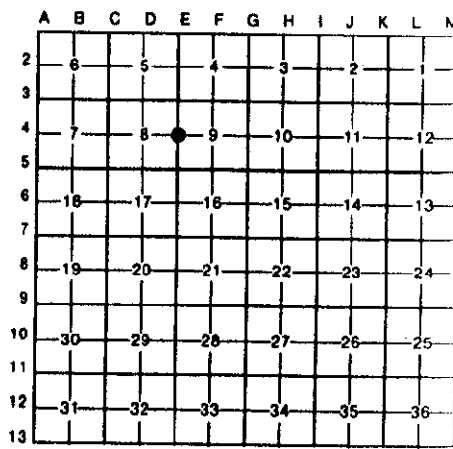
For corners in
Luce

	Located In:	Corner Code #	
(County)			
1. Public Land Survey	T <u>45N</u> R <u>9W</u>	<u>E-4</u>	
	T _____ R _____	_____	_____
	T _____ R _____	_____	_____
	T _____ R _____	_____	_____
2. Property Controlling in Section	S _____ T _____ R _____	_____	_____
	S _____ T _____ R _____	_____	_____
3. Miscellaneous Property in Sec.	S _____ T _____ R _____	_____	_____
	S _____ T _____ R _____	_____	_____
4. Lot No. _____, Recorded Plat _____			
5. Private Claims _____			

Filed 1/20 A.D., 1995
 At 12:30 o'clock P. M.
 Liber 2
 File No. page 622
Kathy S. Mahan
Luce County Reg. of Deeds
 Register of Deeds Stamp & File Number

I, Keith R. Waters, in a field survey on December 8, 1994, do hereby certify that under requirements of P.A. 74, Michigan P.A. of 1970, the corner points mentioned in lines 1 and 2 above were in conformance with regulations and rules therefore as required in the current manual of survey instructions of the United States Department of the Interior, Bureau of Land Management or by a decree of a Court of Law and/or that the corner points mentioned in lines 3, 4 and 5 above were in conformance with the rules of the Michigan Board of Land Surveyors or by a Decree of a Court of Law; established, re-established, monumented, re-monumented, recovered, found as expressed below:

NOTE: Not more than 4 corners, all in the same town and range, may be recorded on this certificate.



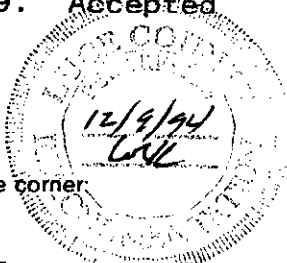
A. Description of original monument and accessories and/or subsequent restoration:
E-4 1/4 Corner Common to Sections 8 & 9, T45N, R9W

Original ties to post: Sugar 5, N62°E 14 links
 Sugar 10, S70°W 15 links



B. Description of corner evidence found and/or method applied in restoring or reestablishing corner:
E-4 (T45N, R9W)

This corner is being perpetuated as part of the Luce County Remonumentation Program. Found a 1/2" iron with plastic cap in the centerline of a north-south gravel road (County Road 411). Corner is 2640.10 feet from section corner to the north, 2639.20 feet from section corner to the south, and is 9.0 feet east of a straight line between said section corners. Corner position appears to have been used for survey work in the northwest 1/4 of section 9. **Accepted** corner as found and established witness objects.



C. Description of monument for corner and accessories established to perpetuate locating the position of the corner:

E-4 (T45N, R9W)
 Corner is a 1/2" iron with plastic cap #11359 in the centerline of north-south gravel road (County Road 411). Witnesses:

- 8" Spruce, N33°W 25.44'
- 4" Scotch Pine, S72°W 38.56'
- 6" Spruce, S39°E 44.26'
- 8" Spruce, N84°E 39.58'
- 1/2" Iron w/cap 11359, EAST 23.72'

Note: Distances to trees are to a nail and tag in the side. Trees are blazed and painted. Bearings are compass bearings corrected for declination.

Signed by Keith R. Waters Date 12-23-94
 Surveyor's Michigan License No. 33142