

LAND CORNER RECORDATION CERTIFICATE
Filing Requirement of Act 74, Mich. P.A. 1970

For corners in
LUCE
(County)

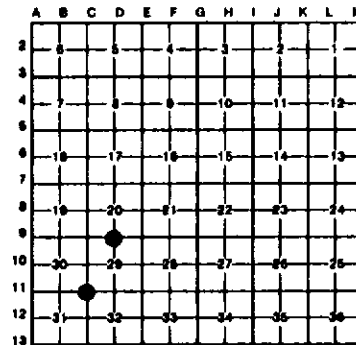
	Located In:	Corner Code -#
1. Public Land Survey	T <u>45N</u> R <u>10W</u>	<u>C11</u>
	T <u>45N</u> R <u>10W</u>	<u>89</u>
	T _____ R _____	_____
	T _____ R _____	_____
2. Property Controlling in Section	S _____ T _____ R _____	_____
	S _____ T _____ R _____	_____
3. Miscellaneous Property in Sec.	S _____ T _____ R _____	_____
	S _____ T _____ R _____	_____

Register of Deeds Stamp & File Number

4. Lot No. _____, Recorded Plat _____
 5. Private Claims _____

I, Stephan J. Szyszkoski, in a field survey on May 27, 1992, 19_____, do hereby certify that under requirements of P.A. 74, Michigan P.A. of 1970, the corner points mentioned in lines 1 and 2 above were in conformance with regulations and rules therefore as required in the current manual of survey instructions of the United States Department of the Interior, Bureau of Land Management or by a decree of a Court of Law and/or that the corner points mentioned in lines 3, 4 and 5 above were in conformance with the rules of the Michigan Board of Land Surveyors or by a Decree of a Court of Law; established, re-established, monumented, re-monumented, recovered, found as expressed below:

NOTE: Not more than 4 corners, all in the same town and range, may be recorded on this certificate.



A. Description of original monument and accessories and/or subsequent restoration:

(C11) Section corner common to Section 29, 30, 31, 32. Corner previously recorded by Billy D. Buckler in 1960 as a 1" pipe with a 4" Brass cap set from original W. Pine BT. Record witnesses are as follows: 10" White Pine (S29 NBT) N10E 87 links, 5" Black Spruce (S30 NBT) N 10W 44 links, 5" Black Spruce (S31 NBT) S66W 21 1/2 links. Squared and scribed 4" B. Spruce at corner.
 (89) 1/4 corner between sections 20 and 29. Corner previously recorded in 1970 and 1980 by Billy D. Buckler. 1980 recordation reported to correct erroneous 1970 monument. 1980 witnesses are as follows: 8" maple N10E 19.0', 10" maple S8W 11.7', 14" Beech N61W 18.6'.

B. Description of corner evidence found and/or method applied in restoring or reestablishing corner:

(C11) Found and accepted a 1" pipe with 4" Brass Michigan Dept. of Conservation cap adjacent to squared 9" B. Spruce with blazes and scribing nearly overgrown. Recovered 2 of Buckler's BT's and remeasured as described below. Monument projects about 3' above ground and leans northerly so that the cap is about 0.7' north of the point where the pipe enters the ground. All measurements below are to the top center of the cap.
 (89) Recovered monument and accessories as recorded by Buckler in 1980. Found recorded monument to be 17.1' south and 1' west of the single proportionate position intended by Buckler. Removed the 1980 monument and reestablished corner midway and on a straight line between adjacent section corners 2613.80' east and west. At the position for the corner, I placed a 1"x32" painted iron pipe capped with a 4" cast aluminum MDNR tablet.

C. Description of monument for corner and accessories established to perpetuate locating the position of the corner:

(C11) Found 1" pipe with 4" brass cap.	(89) Set 1" capped pipe as described above.
Set measuring nails with MDNR tags in the following trees: N10W 1.87' in E. Face 9" B. Spruce with old 4-sided blazes, N21E 59.6' in E face 16" W. Pine (Buckler's), S84E 13.78' in W face 9" B. Spruce (S32 NBT), S81W 13.32' in S. face 10" B. Spruce with old blaze (Buckler's).	Placed measuring nails with MDNR tags in the following trees: S09W 29.3' in E face 12" maple (Buckler's 1980 NBT) scribed new BH blaze 1/4S; S71W 19.8' in W face 18" Beech (1/4S NBT); N47E 2.76' in W face 10" maple (Buckler's 1980 NBT) scribed new BH blaze 1/4S; S82E 6.42' in S face 10" maple (1/4S NBT). Set sq'd wood post 1' west. Corner lies 382' west of an old NW-SE grade.



Signed by Stephan J. Szyszkoski Date June 8, 1992
 Surveyor's Michigan License No. 33986