

**LAND CORNER RECORDATION CERTIFICATE**  
**Filing Requirement of Act 74, Mich. P.A. 1970**

For corners in  
LUCE

	County	Located In:	Corner Code -#
1. Public Land Survey		T. 45N R. 10W	B9
		T. 45N R. 10W	C10
		T. 45N R. 10W	C9
		T. _____ R. _____	_____
2. Property Controlling in Section	S. _____ T. _____	R. _____	_____
	S. _____ T. _____	R. _____	_____
3. Miscellaneous Property in Sec.	S. _____ T. _____	R. _____	_____
	S. _____ T. _____	R. _____	_____

Register of Deeds Stamp & File Number

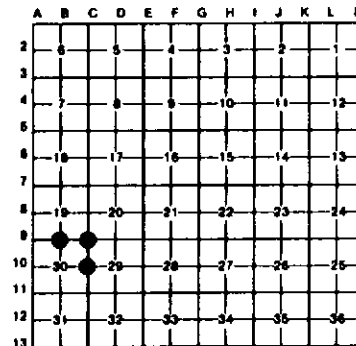
4. Lot No. \_\_\_\_\_, Recorded Plat \_\_\_\_\_  
 5. Private Claims \_\_\_\_\_

C9 May 27, 1992

C10 May 27, 1992

I, Stephan J. Szyszkoski, in a field survey on B9 May 26, 1992, 19\_\_\_\_\_, do hereby certify that under requirements of P.A. 74, Michigan P.A. of 1970, the corner points mentioned in lines 1 and 2 above were in conformance with regulations and rules therefore as required in the current manual of survey instructions of the United States Department of the Interior, Bureau of Land Management or by a decree of a Court of Law and/or that the corner points mentioned in lines 3, 4 and 5 above were in conformance with the rules of the Michigan Board of Land Surveyors or by a Decree of a Court of Law; established, re-established, monumented, re-monumented, recovered, found as expressed below:

**NOTE: Not more than 4 corners, all in the same town and range, may be recorded on this certificate.**



**A. Description of original monument and accessories and/or subsequent restoration:**

(B9) 1/4 corner between sections 19 and 30. Corner previously recorded by Billy D. Buckler in 1970 as a 1" pipe with 4" aluminum cap set by single proportionate measurement between section corners with the following witness: 9" B. Cherry (1/4S NBT) N70E 83.1'.  
 (C10) 1/4 corner between section 29 and 30. Corner previously recorded by Billy D. Buckler in 1967 as a 1" pipe with 4" aluminum cap with witnesses as follows: 8" W. Pine (1/4S NBT) S51W 17.4', 31" W. Pine (1/4S NBT) S66E 44.0'.  
 (C9) Section corner common to Sections 19, 20, 29, 30. Corner previously recorded by Billy D. Buckler in 1967 as a 1" pipe with a 4" Aluminum cap placed at a found squared and scribed tamarack post. Record witnesses are as follows: 7" tamarack (S19 NBT) N12W 10.5', 4" B. Spruce (S29 NBT) S65E 22.9'.

**B. Description of corner evidence found and/or method applied in restoring or reestablishing corner:**

(B9) Found and accepted Buckler's monument and accessory as recorded. Placed 3 new witness trees and set measuring nail in Buckler's BT. Corner lies at a 9" cedar corner fence post in the southeast corner of a pasture clearing. Wire fence lines run west and north from the corner.  
 (C10) Found and accepted Buckler's monument and accessories as recorded. Placed measuring nails with MDNR tags in his BT's and marked two new witness trees.  
 (C9) Found and accepted Buckler's monument and accessories as recorded. Placed measuring nails in his witnesses trees and marked two new witness trees.

**C. Description of monument for corner and accessories established to perpetuate locating the position of the corner:**

(B9) Found 1" pipe with 4" aluminum MDNR tablet. N70E 82.5' set nail and MDNR tag in NW face cherry clump, Buckler's blaze is overgrown, scribed BH blaze 1/4S19. S64E 16.8' set nail and MDNR tag in NE face 5" White Birch (1/4S30 NBT); S07W 28.6' set nail and MDNR tag in E face 6" cherry (1/4S30 NBT); S76W 22.5' set nail and MDNR tag in S face 7" cherry (1/4S30 NBT)	(C10) Found 1" pipe with 4" aluminum cap. Placed measuring nails and MDNR tags in the following trees: S56W 18.3' in E. face 10" White Pine (Buckler's), N40W 44.94' in NE face 9" White Pine (1/4S NBT), S60E 44.6' in N face 18" White Pine (Buckler's), S52E 8.45' in NE face 10" Tamarack (1/4S NBT). East 1' set 4" sq'd tamarack post. Cut line from corner runs S67W.	(C9) Found 1" pipe with 4" Aluminum cap. Placed measuring nails with MDNR tags in the following trees: N10W 11.0' in N face 10" tamarack (Buckler's), S65E 23.3' in N face 4" B. Spruce (Buckler's), S71W 7.7' in NW face 4" B. Spruce (S30 NBT), S20W 21.1' in SW face 5" B. Spruce (S30 NBT).
---	--	---

Signed by Stephan J. Szyszkoski  
 Surveyor's Michigan License No. 33986



June 8, 1992