

LAND CORNER RECORDATION CERTIFICATE
Filing Requirement of Act 74, Mich. P.A. 1970

For corners in
LUCE

(County)

Located In:

Corner Code -#

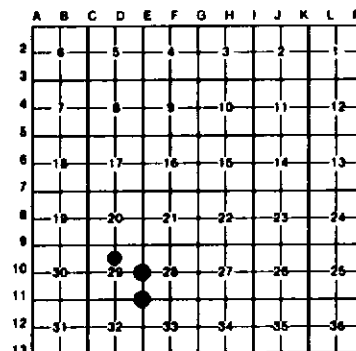
| | | | | | | | |
|---------------------------------------|---|-----|---|-----|-----|-----|---|
| 1. Public Land Survey | T | 45N | R | 10W | E11 | | |
| | T | 45N | R | 10W | E10 | | |
| | T | | R | | | | |
| 2. Property Controlling in Section | S | 29 | T | 45N | R | 10W | 5 |
| | S | | T | | R | | |
| | S | | T | | R | | |
| 3. Miscellaneous Property in Sec. | S | | T | | R | | |
| | S | | T | | R | | |
| | S | | T | | R | | |

Register of Deeds Stamp & File Number

4. Lot No. _____, Recorded Plat _____
 5. Private Claims _____

I, Stephan J. Szyszkoski, in a field survey on June 22, 1992, 19_____, do hereby certify that under requirements of P.A. 74, Michigan P.A. of 1970, the corner points mentioned in lines 1 and 2 above were in conformance with regulations and rules therefore as required in the current manual of survey instructions of the United States Department of the Interior, Bureau of Land Management or by a decree of a Court of Law and/or that the corner points mentioned in lines 3, 4 and 5 above were in conformance with the rules of the Michigan Board of Land Surveyors or by a Decree of a Court of Law; established, re-established, monumented, re-monumented, recovered, found as expressed below.

NOTE: Not more than 4 corners, all in the same town and range, may be recorded on this certificate.



A. Description of original monument and accessories and/or subsequent restoration:

(E11) Corner common to Sections 28-29-32-33. Corner previously recorded by Billy D. Buckler in 1970 as a 1" pipe with 4" aluminum cap placed in abandoned N-S road 20' East of an old fence corner. Bearings: 9" B. Cherry (S28 NBT) N74E 9.7', 8" B. Cherry (S29 NBT) N66W 53.1'. Old Michigan Dept. of Transportation plans for M-117 (dated 1955) show a 1 1/4" axle at corner with the following witnesses: 8" Cherry N40E 17.09', fence post N60W 25.35', fence post S40W 21.20'. It is not known whether this corner was found or placed by the Highway Dept.

(E10) 1/4 corner between section 28 and 29. Corner established by Deputy Surveyor William Ives in 1849. Original witnesses: Beech 6 S6E 18, Sugar 12 N14W 24. Found no subsequent record.

(5) North 1/16 corner Section 29. Corner not established in original survey. Found no subsequent record.

B. Description of corner evidence found and/or method applied in restoring or reestablishing corner:

(E11) Found and accepted a 1" pipe with 4" aluminum cap placed by Buckler in 1970. Buckler's BT NW checks but blazes are grown over. BT NE has been cut and is gone. MDOT witnesses to axle are gone. Found what appears to be the corner shown on MDOT plans - an axle shaft with approx. 7" diameter hub attached on upper end, buried 6" deep under old road. This axle bears S19W 9.6' from the recorded corner.

(E10) Original post and accessories not recovered. Found no monumentation at the corner location. Found no evidence of use along the 1/4 lines east or west. Reestablished corner equidistant between recorded and monumented section corners 2653.68' north and south, in accordance with the original field notes, and in the center of an old abandoned N-S road, which was also used to control the reestablished positions of these same section corners. At the position for the corner, I placed a standard DNR monument, described below, 6" below the surface of the old road bed.

(5) Established corner midway and on a straight line between the monumented North 1/4 corner of section 29 and the Center of Section 29 (the center being unmonumented by this survey - computed as the intersection of straight lines connecting opposite 1/4 corners). Measured distance north to the North 1/4 corner is 1322.57'.

C. Description of monument for corner and accessories established to perpetuate locating the position of the corner:

(E11) Found 1" pipe with 4" aluminum cap 6" below surface of old road bed. Placed double-headed nails and MDNR tags in the following trees in the faces noted: S59W 23.0' in SE face 5" maple (S31 NBT), N85W 61.2' in N face 5" maple (S29 NBT), N44W 39.0' in SW face 7" maple (S29 NBT), N14E 74.8' in E face power pole.

(E10) Place a 1"x32" painted iron pipe with a yellow plastic cap stamped "MICH. DNR LS 33986". Placed double headed nails with MDNR tags in the following trees: S08E 40.2' in W face 5" maple (1/4S NBT), N72W 20.18' in N face 8" maple (1/4S NBT), N13W 24.80' in E face 7" maple (1/4S NBT), S07E 12.18' in S face 5" maple (1/4S NBT).

(5) Set a 1"x32" painted iron pipe capped with a 4" cast aluminum tablet stamped to identify the corner. Placed doubled headed nails with MDNR tags in the following trees: S76W 7.90' in N face 18" maple (1/16 BT), N62W 31.81' in N face 7" maple (1/16 BT), M27E 21.28' in N face 5" maple (1/16 BT), S08W 12.48' in N face 4" maple (1/16 BT). Placed 4" squared post south, 1'.

Signed by Stephan J. Szyszkoski
 Surveyor's Michigan License No. 33986

