

54

**LAND CORNER RECORDATION CERTIFICATE**  
**Filing Requirement of Act 74, Mich. P.A. 1970**

For corners in  
LUCE  
 (County)

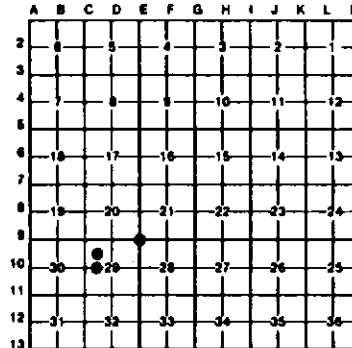
|                                       | Located In:                           | Corner Code # |
|---------------------------------------|---------------------------------------|---------------|
| 1. Public Land Survey                 | T <u>45N</u> R <u>10W</u>             | <u>E9</u>     |
|                                       | T _____ R _____                       | _____         |
|                                       | T _____ R _____                       | _____         |
|                                       | T _____ R _____                       | _____         |
| 2. Property Controlling<br>in Section | S <u>29</u> T <u>45N</u> R <u>10W</u> | <u>4</u>      |
|                                       | S <u>29</u> T _____ R _____           | <u>8</u>      |
| 3. Miscellaneous<br>Property in Sec.  | S _____ T _____ R _____               | _____         |
|                                       | S _____ T _____ R _____               | _____         |

Register of Deeds Stamp & File Number

4. Lot No. \_\_\_\_\_, Recorded Plat \_\_\_\_\_  
 5. Private Claims \_\_\_\_\_

I, Stephan J. Szyszkoski, in a field survey on JUNE 22, 1992, 19\_\_\_\_\_, do hereby certify that under requirements of P.A. 74, Michigan P.A. of 1970, the corner points mentioned in lines 1 and 2 above were in conformance with regulations and rules therefore as required in the current manual of survey instructions of the United States Department of the Interior, Bureau of Land Management or by a decree of a Court of Law and/or that the corner points mentioned in lines 3, 4 and 5 above were in conformance with the rules of the Michigan Board of Land Surveyors or by a Decree of a Court of Law; established, re-established, monumented, re-monumented, recovered, found as expressed below:

**NOTE:** Not more than 4 corners, all in the same town and range, may be recorded on this certificate.



**A. Description of original monument and accessories and/or subsequent restoration:**

- (E9) Section corner common to Sections 20-21-28-29. Corner reestablished and recorded by Billy D. Buckler in 1970. Record shows a 1" pipe with 4" aluminum cap buried in old abandoned N-S road. Bearings: 7" hard maple (S28 NBT) S77E 10.6', 5" hard maple (S21 NBT) N18E 34.5'.  
 (4) NW 1/16 corner, Section 29. Corner not set in original survey. Found no subsequent record.  
 (8) West 1/16 corner, Section 29. Corner not set in original survey. Found no subsequent record.

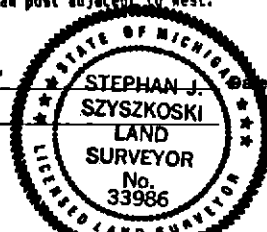
**B. Description of corner evidence found and/or method applied in restoring or reestablishing corner:**

- (E9) Found and accepted Buckler's monument and accessories as recorded. NBT's have blazes grown over. Placed measuring nails with MDNR tags in these NBT's and scribed new BH blaze as described below. Also marked two additional bearing trees. Corner is in center of old abandoned road at an E-W chain gate.  
 (4) Established corner at the computed intersection straight lines connecting opposite 1/16 corners, the NW 1/16 and the NE 1/16 being monumented. The West 1/16 between 20-29 and the North 1/16 between 29-30 were computed only, and not monumented in this survey. Found no monumentation or evidence of use at the corner location.  
 (8) Found no monumentation or evidence of use at corner location. Established corner midway and on a straight line between the monumented NW 1/4 corner and the Center of Section 29 (the center being unmonumented by this survey - computed as the intersection of straight lines connecting opposite 1/4 corners). At the position for the corner, I placed a standard MDNR monument described below. Measured distance north to NW 1/16 corner is 1320.41; west to the 1/4 corner is 1311.14'.

**C. Description of monument for corner and accessories established to perpetuate locating the position of the corner:**

- |  |   |   |
|--|---|---|
| (E9) Found 1" pipe with 4" aluminum cap stamped to identify the corner. Placed double headed nails with MDNR tags in the following trees: S35E 10.8' in N face 13" maple (S28) (Buckler's NBT), S69W 35.6' in N face of power pole, N10W 25.15' in E face 10" maple (S20 NBT), N21E 35.04' in N face 8" maple (S21) (Buckler's NBT). | (4) Set a 1"x32" painted iron pipe capped with a 4" cast aluminum tablet stamped to identify the corner. Set double headed nails with MDNR tags in the following trees: N14W 12.18' in SW face 8" maple (1/16 BT), N75E 28.6' in S face 7" maple (1/16 BT), S34E 12.87' in W face 7" poplar (1/16 BT), S80W 9.15' in N face 5" maple (1/16 BT). Placed 4" squared balsam post adjacent to west. | (8) Set a 1"x32" painted iron pipe capped with a 4" cast aluminum tablet stamped to identify the corner. Placed double headed nails with MDNR tags in the following trees: S75W 4.4' in N face 8" balsam (1/16 BT), N41W 4.3' in NE face 6" Yellow Birch (1/16 BT), S32E 16.72' in NE face 9" maple (1/16 BT), S20W 7.79' in NW face 11" maple (1/16 BT). Placed 4" squared maple post south, 1'. |
|--|---|---|

Signed by Stephan J. Szyszkoski  
 Surveyor's Michigan License No. 33986



6-22-92