

MICHIGAN  
DEPARTMENT OF CONSERVATION  
FORESTRY DIVISION

# LAND CORNER RECORD

T. 45N N.R. 9-10W

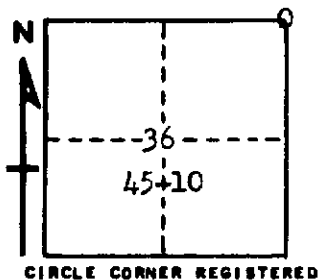
Luce COUNTY

DESCRIPTION OF CORNER Sec. Cor. common to Secs. 30-31-25-36

CORNER MONUMENT 1" pipe with 4" aluminum cap

DATE MONUMENT PLACED AND WITNESSED 4-22-69

WITNESSES TO CORNER..... 11" Jack Pine (S25 NBT) N32°W 20.5'



12" Jack Pine (S36 NBT) S40°W 48.2'

AND

DESCRIPTION IN DETAIL AS TO HOW CORNER WAS LOCATED AND IDENTIFIED OR RESTORED.

This corner replaced at an old wood post, found lying on ground. Remains of possible Hemlock B.T. bearing S52°W 26 lks.  
Position checks with corners to North and South.

SURVEYOR'S SEAL

*Billy D. Buckler,*  
SIGNED Billy D. Buckler DATE 8-28-69  
REGISTERED LAND SURVEYOR