

APR 01 1996

LUCE COUNTY REMONUMENTATION CORNER

COMMISSION

LAND CORNER RECORDATION CERTIFICATE
Filing Requirement of Act 74, Mich. P.A. 1970

For corners in

Luce _____ (County)	Located In:	Corner Code #
1. Public Land Survey	T45N R 10W	K-3
	T _____ R _____	_____
	T _____ R _____	_____
	T _____ R _____	_____
2. Property Controlling in Section	S _____ T _____ R _____	_____
	S _____ T _____ R _____	_____
3. Miscellaneous Property in Sec.	S _____ T _____ R _____	_____
	S _____ T _____ R _____	_____

LUCE COUNTY
REGISTER OF DEEDS
Recorded

02-29-1996 15:21:20

Liber 2 page 657

Kathy S. Mahari, Register
REGISTER OF DEEDS

Kathy S. Mahari

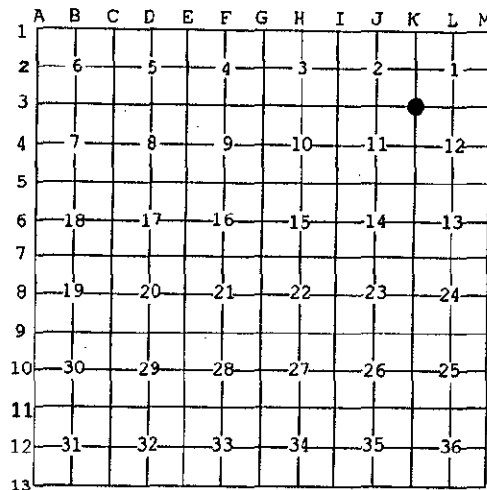
Register of Deeds Stamp & File Number

4. Lot No. _____, Recorded Plat _____

5. Private Claims _____

I, Keith R. Waters, in a field survey on 12/18, 1995 do hereby state that under requirements of P.A. 74, Michigan P.A. of 1970, the corner points mentioned in lines 1 and 2 above were in conformance with regulations and rules therefore as required in the current manual of survey instructions of the United States Department of the Interior, Bureau of Land Management or by a decree of a Court of Law and /or that the corner points mentioned in lines 3, 4 and 5 above were in conformance with the rules of the Michigan Board of Land Surveyors or by a Decree of a Court of Law; established, re-established, monumented, recovered, found as expressed below:

NOTE: Not more than 2 corners, all in the same town and range, may be recorded on this certificate.



A. Description of original monument and accessories and/or subsequent restoration:

K-3 Corner Common to Sections 1, 2, 11, & 12, Town 45 North, Range 10 West

1850 - Original ties to set post: Sugar 7, S49°E 29 links - Elm 14, N50°W 08 links.

1988 - Neil E. Hill, P.S. 27447, page 404, Luce County recorded corners. Set a 1/2" iron with cap #27447 in a monument box. Location established using relationship between land corners north and south according to 1951 Highway plans. Witnesses:

MDOT tag in guard post, N75°E 9.70' - MDOT tag in guard post, S40°E 13.11' - Small Boat Spike, S50°W 0.93' -

Southeast corner concrete slab for telephone boxes, S80°W 115.06' - MDOT tag in power pole, N30°W 120.01'

Corner is shown on MDOT right-of-way maps for Highway M-123 at Station 62+75.67, 13.85 feet east of centerline.

B. Description of corner evidence found and/or method applied in restoring or reestablishing corner:

This corner is being perpetuated as part of the Luce County Remonumentation Program.

Found a 1/2" iron pin with cap #27447 in a monument box 13.8 feet east of the centerline of Highway M-123, on the approximate south edge of County Road to the west. Corner checks well with existing witnesses as called for in 1988 LCRC and with MDOT right-of-way maps.



C. Description of monument for corner and accessories established to perpetuate locating the position of the corner:

Corner is a 1/2" iron with cap #27447 in a monument box 13.8 feet east of the centerline of Highway M-123, at the south edge of County Road to the west. Witnesses:

Southeast corner of concrete slab for telephone boxes, S87°W 115.06'

Nail/tag P.S. 33142 in light pole (ML4/38/A), N70°W 97.05'

Nail/MDOT tag in power pole (ML4/38), N42°W 120.01'

Nail/MDOT tag in top of guard rail post, N75°E 9.70'

Nail/MDOT tag in top of guard rail post, S40°E 13.11'

Small boat spike in asphalt pavement, S50°W 0.93'

Note: Bearings are compass bearings corrected for declination.

Signed by Keith R. Waters

Date 12-29-95

Surveyor's Michigan License No. 33142

