

Luce County Remonumentation Program

1993

LAND CORNER RECORDATION CERTIFICATE

Filing Requirement of Act 74, Mich. P.A. 1970

COMMISSION

For corners in

Luce (County)	Located In:	Corner Code #
1. Public Land Survey	T <u>45N</u> R <u>11W</u>	<u>E-4</u>
	T _____ R _____	_____
	T _____ R _____	_____
	T _____ R _____	_____
2. Property Controlling in Section	S _____ T _____ R _____	_____
	S _____ T _____ R _____	_____
3. Miscellaneous Property in Sec.	S _____ T _____ R _____	_____
	S _____ T _____ R _____	_____
4. Lot No. _____, Recorded Plat _____		
5. Private Claims _____		

Filed 12-22 A.D., 1993

At 10:00 o'clock A.M.

Liber 2
File No. page 542

Kathy J. Mahan
Luce County Reg. of Deeds

Register of Deeds Stamp & File Number

I, William L. Karr, in a field survey on October 15, 1993, do hereby certify that under requirements of P.A. 74, Michigan P.A. of 1970, the corner points mentioned in lines 1 and 2 above were in conformance with regulations and rules therefore as required in the current manual of survey instructions of the United States Department of the Interior, Bureau of Land Management or by a decree of a Court of Law and/or that the corner points mentioned in lines 3, 4 and 5 above were in conformance with the rules of the Michigan Board of Land Surveyors or by a Decree of a Court of Law; established, re-established, monumented, re-monumented, recovered, found as expressed below:

NOTE: Not more than 4 corners, all in the same town and range, may be recorded on this certificate.

A. Description of original monument and accessories and/or subsequent restoration:

(E-4) 1/4 Corner Sections 8 & 9, T45N-R11W

1849: Corner established by William Ives

1981: Thomas O'Brien, L.S. 21274. Survey recorded in L.1-P.37 of Surveys calls for a found monument box.

Undated: State highway plans for abandoned State Highway M-98 show corner 15.37' North of centerline.

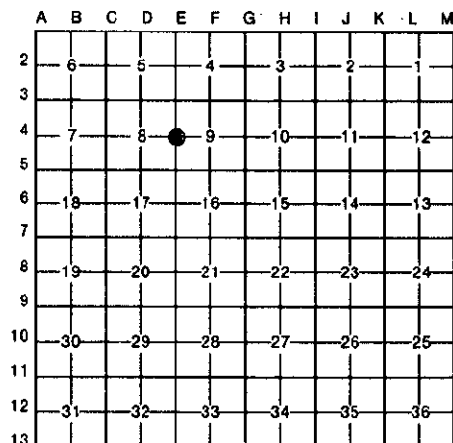
B. Description of corner evidence found and/or method applied in restoring or reestablishing corner:

Corner perpetuated as part of the Luce County Remonumentation Program. Found a 1/2" bolt with a 1/2" square head in a monument box. Falls in North gravel shoulder, approximately 15.5' North of centerline. Falls 8' West of extension of remains of barb wire fence to North (no posts, fence runs between trees). Found a 1/2" iron - South - 78.21'. Corner position checks well with other corners from the O'Brien survey. Distance East to the 1/4 Corner sections 9 & 10 is 5301.59' (Highway plans - 5302.29'). Accepted corner as found. Replaced found bolt with a 1/2" x 24" iron with a 3 1/4" diameter stamped aluminum cap.

C. Description of monument for corner and accessories established to perpetuate locating the position of the corner:

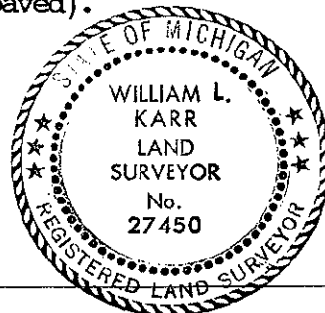
Corner is a 1/2" x 24" iron with a 3 1/4" diameter stamped aluminum cap in a monument box. Falls in North gravel shoulder of County Road H-33(98) (East-West, paved). Falls 4.5' North of North edge pavement, approximately 15.5' North of centerline. Falls on extension of centerline of County Road 438 to West (East-West, paved).

8" Maple	N30°E	103.17'
13" Maple	S35°E	95.76'
1/2" iron	South	78.21'
13" Maple	S10°W	93.78'
8" Maple of Twin	N06°W	92.89'



Signed by William L. Karr
Surveyor's Michigan License No. 27450

Date 12/16/93



NOTE: Bearings are compass bearings corrected for declination. Distances are to a nail with P.S. 27450 tag in side of witness objects unless noted.