

Luce County Remonumentation Program

1993

COMMISSION

LAND CORNER RECORDATION CERTIFICATE
Filing Requirement of Act 74, Mich. P.A. 1970

For corners in

Luce (County)	Located In:	Corner Code #
1. Public Land Survey	T 45N R 11W	E-11
	T _____ R _____	_____
	T _____ R _____	_____
	T _____ R _____	_____
2. Property Controlling in Section	S _____ T _____ R _____	_____
	S _____ T _____ R _____	_____
3. Miscellaneous Property in Sec.	S _____ T _____ R _____	_____
	S _____ T _____ R _____	_____
4. Lot No. _____, Recorded Plat _____		
5. Private Claims _____		

Filed 12-22 A.D., 1993

At 10:00 o'clock A.M.

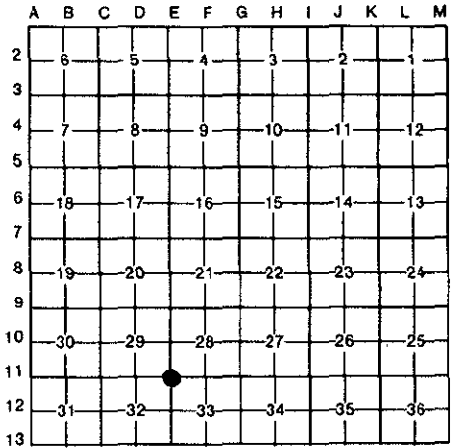
File No. Page 543

Walter S. Mahan
Luce County Reg. of Deeds

Register of Deeds Stamp & File Number

I, William L. Karr, in a field survey on October 19, 1993, do hereby certify that under requirements of P.A. 74, Michigan P.A. of 1970, the corner points mentioned in lines 1 and 2 above were in conformance with regulations and rules therefore as required in the current manual of survey instructions of the United States Department of the Interior, Bureau of Land Management or by a decree of a Court of Law and/or that the corner points mentioned in lines 3, 4 and 5 above were in conformance with the rules of the Michigan Board of Land Surveyors or by a Decree of a Court of Law; established, re-established, monumented, re-monumented, recovered, found as expressed below:

NOTE: Not more than 4 corners, all in the same town and range, may be recorded on this certificate.



A. Description of original monument and accessories and/or subsequent restoration:

(E-11) Section Corner Sections 28, 29, 32 & 33, T45N-R11W

1849: Corner established by William Ives
Set Post
Sugar 9 N 65 W 33 links
W. Birch 12 S 45 E 65 links

B. Description of corner evidence found and/or method applied in restoring or reestablishing corner:

Corner perpetuated as part of the Luce County Remonumentation Program. Found a 2" O.D. pipe with bent over top, 15" below gravel road surface. Falls in intersecting road centerlines of roads North, East and West. Falls on approximate extension of fence line to South (Fence not straight). Found a 2" O.D. Witness corner pipe, 12" below ground in Northeast quad believed to be set by County Surveyor, J. Kinsey (2 Witness Pipes set at 45° and 90.0' apart). Witness Pipe bears N41°E - 45.10'. Accepted corner position as found. Cut-off bent portion of pipe and set a 1/2" x 48" iron with a 3 1/4" diameter stamped aluminum cap in found pipe. Set a 1/2" x 18" iron in witness corner pipe to bring to surface.

C. Description of monument for corner and accessories established to perpetuate locating the position of the corner:

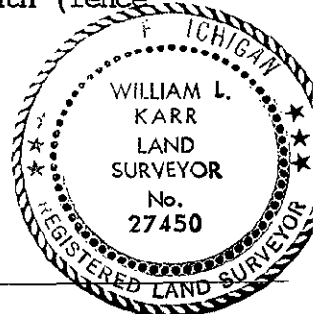
Corner is a 1/2" x 48" iron with a 3 1/4" diameter stamped aluminum cap set in a 2" O.D. pipe. Aluminum cap is 6" below gravel road surface. Falls in intersecting centerlines of County Road 468 (East-West, gravel) and County Road 449 to North (North-South, gravel). Falls on approximate extension of fence line to South (fence not straight).

2" O.D. Pipe	N41°E	45.10'
Southwest Foundation Corner of Wood Frame Building (Old School)	S51°E	166.42'
24" Maple	S04°E	96.74'
Power Pole NY3/167D/27	S40°W	46.58'
Drill Hole in West End of 18" Concrete Culvert	N22°W	39.57'

Signed by *William L. Karr*

Date 12/16/93

Surveyor's Michigan License No. 27450



NOTE: Bearings are compass bearings corrected for declination. Distances are to a nail with P.S. 27450 tag in side of witness objects unless noted.