

Luce County Remonumentation Program

1993

COMMISSION

LAND CORNER RECORDATION CERTIFICATE  
Filing Requirement of Act 74, Mich. P.A. 1970

For corners in

<u>Luce</u> (County)	Located in:	Corner Code #
1. Public Land Survey	T <u>45N</u> R <u>11W</u>	<u>G-4</u>
	T _____ R _____	_____
	T _____ R _____	_____
	T _____ R _____	_____
2. Property Controlling in Section	S _____ T _____ R _____	_____
	S _____ T _____ R _____	_____
3. Miscellaneous Property in Sec.	S _____ T _____ R _____	_____
	S _____ T _____ R _____	_____
4. Lot No. _____, Recorded Plat _____		
5. Private Claims _____		

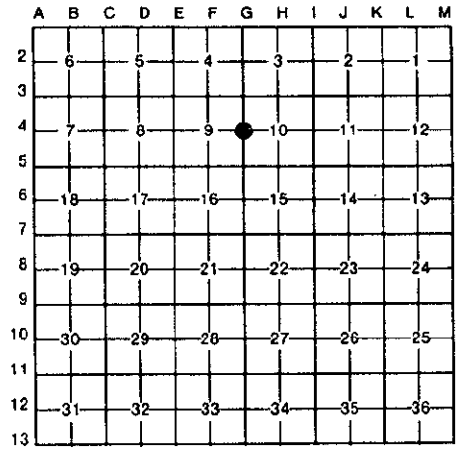
Filed 62-22 A.D., 1993

At 10:00 o'clock A. M.

File No. Liber 2 page 546

*Walter S. Malar*  
Luce County Reg. of Deeds

Register of Deeds Stamp & File Number



I, William L. Karr, in a field survey on October 20, 1993, do hereby certify that under requirements of P.A. 74, Michigan P.A. of 1970, the corner points mentioned in lines 1 and 2 above were in conformance with regulations and rules therefore as required in the current manual of survey instructions of the United States Department of the Interior, Bureau of Land Management or by a decree of a Court of Law and/or that the corner points mentioned in lines 3, 4 and 5 above were in conformance with the rules of the Michigan Board of Land Surveyors or by a Decree of a Court of Law; established, re-established, monumented, re-monumented, recovered, found as expressed below:

NOTE: Not more than 4 corners, all in the same town and range, may be recorded on this certificate.

A. Description of original monument and accessories and/or subsequent restoration:  
(G-4) 1/4 Corner Sections 9 & 10, T45N-R11W

1849: Corner established by William Ives  
Undated: State Highway plans for abandoned State Highway M-98 show corner 1.92' South of centerline.

B. Description of corner evidence found and/or method applied in restoring or reestablishing corner:  
Corner perpetuated as part of the Luce County Remonumentation Program. Found a railroad spike in a monument box. Falls approximately 2' South of centerline. Falls on extension of fence line to North. Found 2 concrete right-of-way markers to the North. Distance West to the 1/4 Corner Sections 8 & 9 is 5301.59' (Highway Plans - 5302.29'). Accepted corner position as found. Replaced found railroad spike with a 1/2" x 24" iron with a 3 1/4" diameter stamped aluminum cap.

C. Description of monument for corner and accessories established to perpetuate locating the position of the corner:  
Corner is a 1/2" x 24" iron with a 4 1/4" diameter stamped aluminum cap in a monument box. Falls approximately 2' South of the centerline of County Road H-33(98) (East-West paved). Falls on extension of fence line to the North.

Drill Hole in Concrete Right-of-Way Marker	North	76.63'
8" Maple	S10°W	41.03'
12" Yellow Birch	S46°W	59.61'
8" Red Pine	N42°W	99.60'



Signed by William L. Karr Date 12/16/93

Surveyor's Michigan License No. 27450

NOTE: Bearings are compass bearings corrected for declination. Distances are to a nail with P.S. 27450 tag in side of witness objects unless noted.