

**LAND CORNER RECORDATION CERTIFICATE**  
**Filing Requirement of Act 74, Mich. P.A. 1970**

For corners in  
Luce

(County)

Located In:

Corner Code #

1. Public Land Survey	T	R	_____
	T	R	_____
	T	R	_____
	T	R	_____
2. Property Controlling in Section	S 22	T 45N R 11W	13
	S 22	T 45N R 11W	14
3. Miscellaneous Property in Sec.	S	T	R
	S	T	R

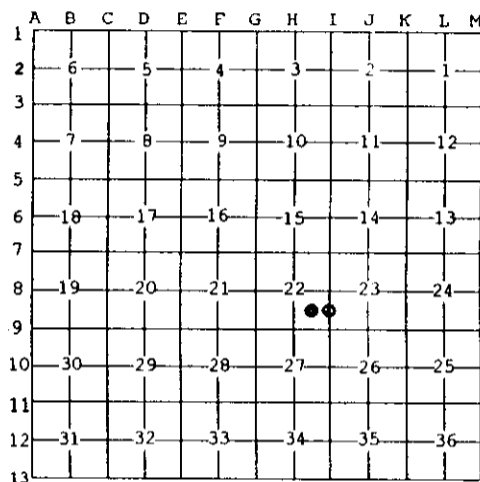
Register of Deeds Stamp & File Number

4. Lot No. \_\_\_\_\_, Recorded Plat \_\_\_\_\_  
 5. Private Claims \_\_\_\_\_

Aug 18 2003

I, Stephan J. Szyszkoski, in a field survey on \_\_\_\_\_, 19\_\_\_\_ do hereby state that under requirements of P.A. 74, Michigan P.A. of 1970, the corner points mentioned in lines 1 and 2 above were in conformance with regulations and rules therefore as required in the current manual of survey instructions of the United States Department of the Interior, Bureau of Land Management or by a decree of a Court of Law and/or that the corner points mentioned in lines 3, 4 and 5 above were in conformance with the rules of the Michigan Board of Land Surveyors or by a Decree of a Court of Law; established, re-established, monumented, recovered, found as expressed below:

**NOTE:** Not more than 2 corners, all in the same town and range, may be recorded on this certificate.

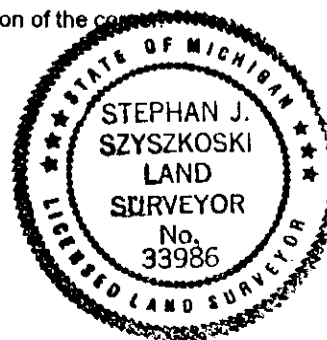


**A. Description of original monument and accessories and/or subsequent restoration:**  
 (13-Sec. 22) Southeast 1/16 corner, Sec. 22. Not established in the original survey.  
 (14-Sec. 22) South 1/16 corner between Sections 22 & 23. Not established in the original survey.

**B. Description of corner evidence found and/or method applied in restoring or reestablishing corner:**  
 (13-Sec. 22) Established the corner at the intersection of straight lines connecting opposite 1/16 corners.  
 (14-Sec. 22) Established the corner midway and on a straight line between Section corner 1314.92' south and Quarter corner 1314.92' north. The corner lies about 45' north of the center of a trail road.

**C. Description of monument for corner and accessories established to perpetuate locating the position of the corner:**

(13) Set 1"IDx36" I.pipe with 4" alum. MDNR cap. Blazed, scribed, and set measuring nails in: 8" Maple N46E 12.0' "SE1/16 BT" 10" Maple N58W 20.65' do 4" Maple S88W 18.75' do 5" Cherry S51W 6.4' do Set cedar post adjacent. Bearings are magnetic. Distances are to nail with tag.	(14) Set 1"IDx36" I.pipe with 4" alum. MDNR cap. Blazed, scribed, and set measuring nails in: 6" Cherry N15W 9.0' "S1/16 BT" 6" Maple N85E 22.35' do 8" Hemlock S40E 12.7' do 5" Maple S06W 10.6' do Placed cedar post adjacent. Bearings are magnetic. Distances are to nail with tag.
--	--



Signed by Stephan J. Szyszkoski  
 Surveyor's Michigan License No. 33986

Date 10/7/03