

Luce County Remonumentation Program

1993

COMMISSION

LAND CORNER RECORDATION CERTIFICATE  
Filing Requirement of Act 74, Mich. P.A. 1970

For corners in  
Luce

(County)	Located In:	Corner Code #
1. Public Land Survey	T <u>45N</u> R <u>12W</u>	<u>G-10</u>
	T _____ R _____	_____
	T _____ R _____	_____
	T _____ R _____	_____
2. Property Controlling in Section	S _____ T _____ R _____	_____
	S _____ T _____ R _____	_____
3. Miscellaneous Property in Sec.	S _____ T _____ R _____	_____
	S _____ T _____ R _____	_____
4. Lot No. _____, Recorded Plat _____		
5. Private Claims _____		

Filed 12-22 A.D., 1993

At 10:00 o'clock A.M.

Liber 2

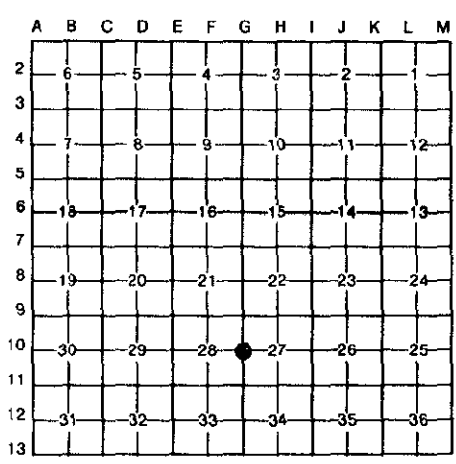
File No. page 516

Kathy A. Mahan

Luce County Reg. of Deeds

Register of Deeds Stamp & File Number

I, William L. Karr, in a field survey on November 11, 19 93, do hereby certify that under requirements of P.A. 74, Michigan P.A. of 1970, the corner points mentioned in lines 1 and 2 above were in conformance with regulations and rules therefore as required in the current manual of survey instructions of the United States Department of the Interior, Bureau of Land Management or by a decree of a Court of Law and/or that the corner points mentioned in lines 3, 4 and 5 above were in conformance with the rules of the Michigan Board of Land Surveyors or by a Decree of a Court of Law; established, re-established, monumented, re-monumented, recovered, found as expressed below:



NOTE: Not more than 4 corners, all in the same town and range, may be recorded on this certificate.

A. Description of original monument and accessories and/or subsequent restoration:  
(G-10) 1/4 Corner Sections 27 & 28, T45N-R12W

1849: Corner established by Guy H. Carleton  
Set 1/4 Section Post  
Cedar 12 S 75 E 23 links  
Cedar 14 S 80 W 21 links

B. Description of corner evidence found and/or method applied in restoring or reestablishing corner:

Corner perpetuated as part of the Luce County Remonumentation Program. Found a "T" iron with L.S. 7873 cap (Eino Sainio), 9" above ground. Corner falls 30' East of remains of a North-South fence line. In talking with local landowners, they state that the iron represents the corner position. Found iron works well with the extension of the North line of North Shore Park Plat (East-West 1/4 Line of Section 28). Accepted corner position as found. Replaced existing iron with a 1/2" x 48" iron with a 3 1/4" diameter stamped aluminum cap.

C. Description of monument for corner and accessories established to perpetuate locating the position of the corner:

Corner is a 1/2" x 48" iron with a 3 1/4" diameter stamped aluminum cap, 4" above ground. Falls 30' East of remains of North-South fence line.

12" Cedar	N40°E	2.57'
6" Cedar	S70°E	12.98'
16" Spruce	S06°W	29.76'
7" Cedar in Clump	N50°W	38.39'



Signed by William L. Karr

Date 12/16/93

Surveyor's Michigan License No. 27450

NOTE: Bearings are compass bearings corrected for declination. Distances are to a nail with P.S. 27450 tag in side of witness objects unless noted.