

STATE OF MICHIGAN  
DEPARTMENT  
OF  
NATURAL RESOURCES

LAND CORNER RECORD

Luce COUNTY

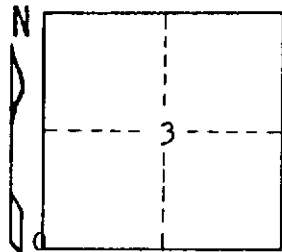
T 46N R 9W

DESCRIPTION OF CORNER Sec. Cor. common to Secs. 3-4-9-10

CORNER MONUMENT 1" pipe with 4" aluminum cap

DATE MONUMENT PLACED AND WITNESSED 11-12-71

WITNESSES TO CORNER..... 10" Jack Pine (S4 NBT) N67°W 22.9'



10" Jack Pine (S10 NBT) S45°E 27.7'

AND

CIRCLE CORNER REGISTERED

DESCRIPTION IN DETAIL AS TO HOW CORNER WAS LOCATED AND IDENTIFIED OR RESTORED.

Re-established this corner on line and by proportionate distance bet. corners;  
 $\frac{1}{2}$  mile south and one mile north. Found ~~no~~ evidence of original jackpine witnesses.

Corner lies on N. side of a pine ridge and 30' N of an old woods road. An old  
logging camp bottom lies immediately west of corner.

SURVEYOR'S SEAL

SIGNED

*Billy D. Buckler*

Billy D. Buckler

DATE

12-7-71

DISTRIBUTION:

REGISTERED LAND SURVEYOR

County Courthouse  
Area Forester (Regions I & II)  
District or Region Surveyor  
Forestry Div., Lansing

R 4047  
Rev. 10/68