

MICHIGAN  
DEPARTMENT OF CONSERVATION  
FORESTRY DIVISION

# LAND CORNER RECORD

T. 46 & 47 N.R. 9W

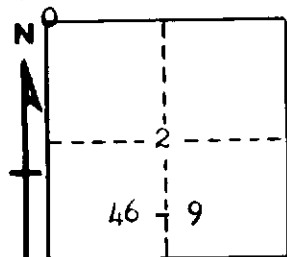
Luce COUNTY

DESCRIPTION OF CORNER Section Corner for sections 34|35

CORNER MONUMENT 1" Iron Pipe with 4" Brass Cap.

DATE MONUMENT PLACED AND WITNESSED 9-1-61

WITNESSES TO CORNER..... 9" Cedar (S34 NBT) N54°W 28 links



8" Cedar (S35 NBT) N49°E 25 links

AND

CIRCLE CORNER REGISTERED

### DESCRIPTION IN DETAIL AS TO HOW CORNER WAS LOCATED AND IDENTIFIED OR RESTORED.

This corner was replaced from old wood post and old wood point which are in proper position from chopped out cedar to SE and badly decayed tamarack stumps to NW, NE & SW which may have been BT's.

SURVEYOR'S SEAL

SIGNED Billy D. Buckler DATE January 30, 1962  
REGISTERED LAND SURVEYOR  
Billy D. Buckler