

MICHIGAN
DEPARTMENT OF CONSERVATION
FORESTRY DIVISION

LAND CORNER RECORD

T. 46 N.R. 10 W.

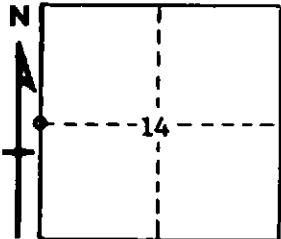
Luce COUNTY

DESCRIPTION OF CORNER 1/4 Corner between Sections 14 and 15.

CORNER MONUMENT 1" Pipe with 4" Aluminum Cap.

DATE MONUMENT PLACED AND WITNESSED 5/16/63

WITNESSES TO CORNER..... 13" Aspen (N.B.T.) N. 31° W., 46 Lks.



11" Aspen (N.B.T.) S. 27° E., 18½ Lks.

AND

CIRCLE CORNER REGISTERED

DESCRIPTION IN DETAIL AS TO HOW CORNER WAS LOCATED AND IDENTIFIED OR RESTORED.

This Corner was placed at Record distance (40.00 chains) South of
Section Corner 10-11-14-15. Found no evidence of Corner.
Corner lies in a Tag Alder marsh.

SURVEYOR'S SEAL

Billy D. Buckler
SIGNED Billy D. Buckler DATE 8-12-63
REGISTERED LAND SURVEYOR