

LUCE COUNTY REMONUMENTATION CORNER

1993

LAND CORNER RECORDATION CERTIFICATE  
Filing Requirement of Act 74, Mich. P.A. 1970

COMMISSION

For corners in  
Luce

(County)	Located In:	Corner Code #
1. Public Land Survey	T <u>46N</u> R <u>10W</u>	G-11
	T _____ R _____	_____
	T _____ R _____	_____
	T _____ R _____	_____
2. Property Controlling in Section	S _____ T _____ R _____	_____
	S _____ T _____ R _____	_____
3. Miscellaneous Property in Sec.	S _____ T _____ R _____	_____
	S _____ T _____ R _____	_____

Filed 12-22 A.D., 1993

At 10:00 o'clock A.M.

File No. 99 585

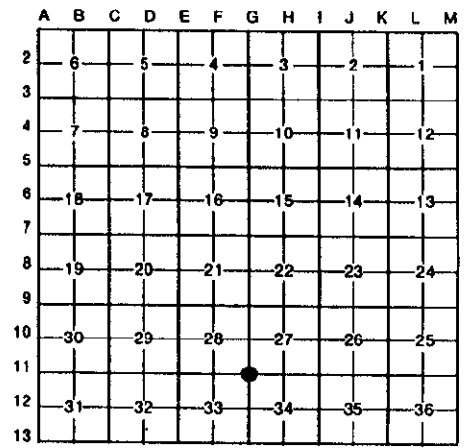
*Keith R. Waters*  
Luce County Reg. of Deeds

Register of Deeds Stamp & File Number

- 4. Lot No. \_\_\_\_\_, Recorded Plat \_\_\_\_\_
- 5. Private Claims \_\_\_\_\_

I, Keith R. Waters in a field survey on October, 1993, do hereby certify that under requirements of P.A. 74, Michigan P.A. of 1970, the corner points mentioned in lines 1 and 2 above were in conformance with regulations and rules therefore as required in the current manual of survey instructions of the United States Department of the Interior, Bureau of Land Management or by a decree of a Court of Law and/or that the corner points mentioned in lines 3, 4 and 5 above were in conformance with the rules of the Michigan Board of Land Surveyors or by a Decree of a Court of Law; established, re-established, monumented, re-monumented, recovered, found as expressed below:

**NOTE: Not more than 4 corners, all in the same town and range, may be recorded on this certificate.**



A. Description of original monument and accessories and/or subsequent restoration:

G-11 Corner Common to Sections 27, 28, 33, & 34, T46N, R10W

Original ties to post:  
 Tamarack 7, S32°E 37½ links  
 Tamarack 7, N47°W 33½ links



B. Description of corner evidence found and/or method applied in restoring or reestablishing corner:

G-11  
 This corner is being perpetuated as part of the Luce County Remonumentation Program. Found a railroad spike in the approximate centerline of north-south asphalt road (County Road 405) at a fence line to the east. In talking with Eino Sainio, P.S. 7873, he indicated that he set the railroad spike based on old County Surveyor notes in the southwest 1/4 of Section 27, T46N, R10W. Distance to recorded Section corner 1 mile east is approximately 5276 feet. (G.L.O. distance is 5309 feet). Accepted position as best available evidence of corner. Replaced railroad spike with a ½" iron and 3¼" aluminum Luce County cap.

C. Description of monument for corner and accessories established to perpetuate locating the position of the corner:

G-11  
 Corner is a ½" rebar with 3¼" aluminum Luce County cap in centerline of County Road 405 at a fence line to the east. Witnesses:

- 14" Aspen, S37°W 91.86'
- 24" Tamarack, S70°W 57.06'
- 7" Aspen, N62°W 84.71'
- 9" Aspen, N49°W 71.41'

Note: Distances are to a nail and tag in the side of tree. Trees are blazed and painted. Bearings are compass bearings corrected for declination.

Signed by Keith R. Waters Date 12-20-93  
 Surveyor's Michigan License No. 33142