

Lansing

LAND CORNER RECORDATION CERTIFICATE
Filing Requirement of Act 74, Mich. P.A. 1970

For corners in
Luce

Located In:	Corner Code #
1. Public Land Survey	T ___ R ___
	T ___ R ___
	T ___ R ___
	T ___ R ___
2. Property Controlling in Section	S 10 T 46N R 10W 11
	S 10 T 46N R 10W 14
3. Miscellaneous Property in Sec.	S ___ T ___ R ___
	S ___ T ___ R ___

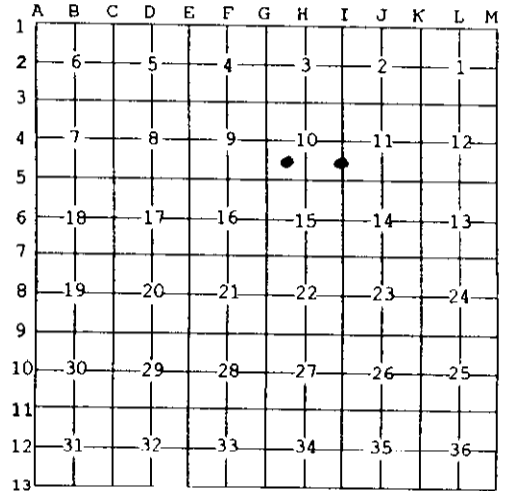
Register of Deeds Stamp & File Number

4. Lot No. _____, Recorded Plat _____
5. Private Claims _____

14 Jan 08 2003
11 Dec 03 2002

I, Stephan J. Szyszkoski, in a field survey on _____, 19____ do hereby state that under requirements of P.A. 74, Michigan P.A. of 1970, the corner points mentioned in lines 1 and 2 above were in conformance with regulations and rules therefore as required in the current manual of survey instructions of the United States Department of the Interior, Bureau of Land Management or by a decree of a Court of Law and /or that the corner points mentioned in lines 3, 4 and 5 above were in conformance with the rules of the Michigan Board of Land Surveyors or by a Decree of a Court of Law, established, re-established, monumented, recovered, found as expressed below:

NOTE: Not more than 2 corners, all in the same town and range, may be recorded on this certificate.



A. Description of original monument and accessories and/or subsequent restoration:
(11-Sec. 10) Southwest 1/16 corner, Section 10. Not established in the original survey. Found no subsequent record.
(14-Sec. 10) South 1/16 corner between Sections 10-11. Established in 1963 by Billy D. Buckler RLS midway and on line between Section Corner to South and intersection of road and fences for accepted 1/4 corner to North. Mr. Buckler squared a 3" Birch for the corner and made witnesses: 8" W. Birch S24W 22 links, 5" Aspen S15E 21 links.

B. Description of corner evidence found and/or method applied in restoring or reestablishing corner:

(11-Sec. 10) Established the corner at the intersection of straight lines connecting opposite 1/16 corners.
(14-Sec. 10) Mr. Buckler's corner tree and witnesses were not recovered. Reestablished the corner midway and on a straight line between Section corner 1317.05' south and Quarter corner 1317.05' north.

C. Description of monument for corner and accessories established to perpetuate locating the position of the corner:

(11) Set 1"IDx36" I.pipe with 4" alum. MDNR cap. Blazed, scribed, and set measuring nails in: 6" W.Spruce N12E 21.05' "SW1/16 BT" 5" W.Spruce N40W 29.15' do 6" Balsam S12E 17.7' do 6" R.Maple N82E 10.15' do Bearings are magnetic. Distances are to nail with tag.	(14) Set 1"IDx36" I.pipe with 4" alum. MDNR cap. Blazed, scribed, and set measuring nails in: 5" Balsam N80W 43.8' "S1/16 BT" 6" Aspen S28W 7.75' do 5" Aspen S66E 12.9' do 4" Aspen East 13.35' do Bearings are magnetic. Distances are to nail with tag.
--	---



Signed by Stephan J. Szyszkoski
Surveyor's Michigan License No. 33986

Date 2/25/03