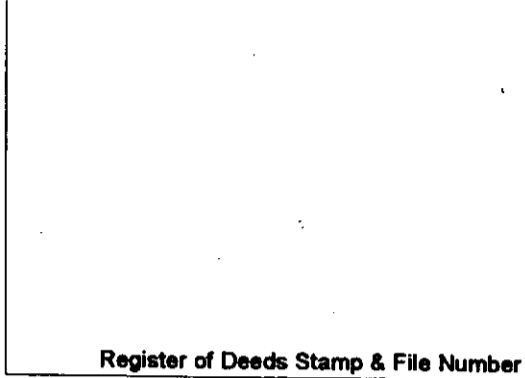


LAND CORNER RECORDATION CERTIFICATE
Filing Requirement of Act 74, Mich. P.A. 1970

For corners in

Luce		Located In:	Corner Code #
(County)			
1. Public Land Survey	T	R	
	T	R	
	T	R	
	T	R	
2. Property Controlling in Section	S 10	T 46N R 10W	5
	S 10	T 46N R 10W	8
3. Miscellaneous Property in Sec.	S	T	R
	S	T	R

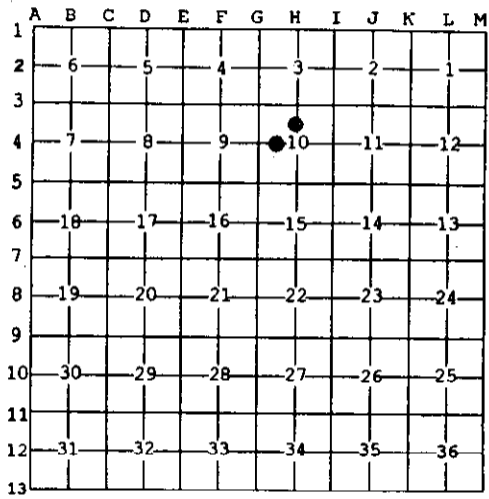


4. Lot No. _____, Recorded Plat _____
 5. Private Claims _____

8 Jan 08 2003
 5 Dec 03 2002

I, Stephan J. Szyszkoski, in a field survey on _____, 20____ do hereby state that under requirements of P.A. 74, Michigan P.A. of 1970, the corner points mentioned in lines 1 and 2 above were in conformance with regulations and rules therefore as required in the current manual of survey instructions of the United States Department of the Interior, Bureau of Land Management or by a decree of a Court of Law and /or that the corner points mentioned in lines 3, 4 and 5 above were in conformance with the rules of the Michigan Board of Land Surveyors or by a Decree of a Court of Law; established, re-established, monumented, recovered, found as expressed below:

NOTE: Not more than 2 corners, all in the same town and range, may be recorded on this certificate.



A. Description of original monument and accessories and/or subsequent restoration:
 (5-Sec. 10) North 1/16 corner, Section 10. Not established in the original survey. Found no subsequent record.
 (8-Sec. 10) West 1/16 corner, Section 10. Not established in the original survey. Found no subsequent record.

B. Description of corner evidence found and/or method applied in restoring or reestablishing corner:
 (5-Sec. 10) Established the corner midway and on a straight line between Quarter corner 1317.11' north and Center of Section 1317.11' south.
 (8-Sec. 10) Established the corner midway and on a straight line between Quarter corner 1320.32' west and Center of Section 1320.32' east. The corner falls in the centerline of a drive which foras a cul-de-sac at the west end of County Road 446.

C. Description of monument for corner and accessories established to perpetuate locating the position of the corner:

(5) Set 1"IDx36" I.pipe with 4" alum. MDNR cap. Blazed, scribed, and set measuring nails in: 10" W.Birch S76E 18.6' "W1/16 BT" 6" Balsam S30W 19.1' do 8" Balsam S76W 22.6' do 6" B.Spruce N59E 19.25' do Bearings are magnetic. Distances are to nail with tag.	(8) Set 5/8"x24" iron reinforcing rod with plas. cap marked "Mich DNR PS 33986" below the rd. surface. Blazed, scribed, and set measuring nails in: 24" Spruce S03W 65.85' "W1/16 BT" 14" R.Pine S67W 88.3' do 24" Spruce N38W 96.15' do 6" W.Birch S70E 56.85' do Bearings are magnetic. Distances are to nail with tag
---	---



Signed by Stephan J. Szyszkoski
 Surveyor's Michigan License No. 33986

Date 1/29/03