

**LAND CORNER RECORDATION CERTIFICATE**  
**Filing Requirement of Act 74, Mich. P.A. 1970**

For corners in

Luce	Located In:	Corner Code #
(County)		
1. Public Land Survey	T ___ R ___	_____
	T ___ R ___	_____
	T ___ R ___	_____
	T ___ R ___	_____
2. Property Controlling in Section	S <u>3</u> T <u>46N</u> R <u>11W</u>	<u>11</u>
	S <u>3</u> T <u>46N</u> R <u>11W</u>	<u>10</u>
3. Miscellaneous Property in Sec.	S ___ T ___ R ___	_____
	S ___ T ___ R ___	_____

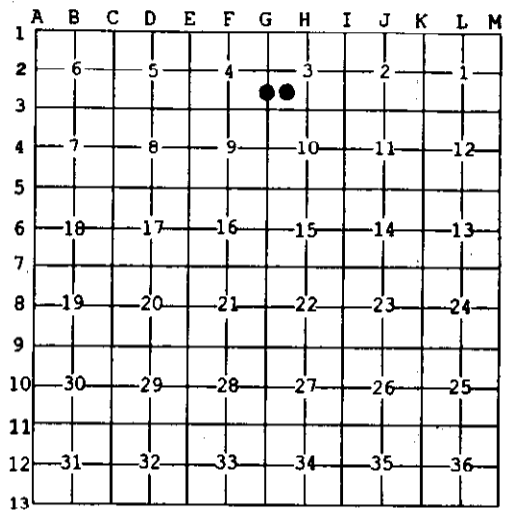
Register of Deeds Stamp & File Number

4. Lot No. \_\_\_\_\_, Recorded Plat \_\_\_\_\_  
 5. Private Claims \_\_\_\_\_

10 Oct 21 2002  
 11 Oct 23 2002

I, Stephan J. Szyszkoski, in a field survey on \_\_\_\_\_, 20\_\_ do hereby state that under requirements of P.A. 74, Michigan P.A. of 1970, the corner points mentioned in lines 1 and 2 above were in conformance with regulations and rules therefore as required in the current manual of survey instructions of the United States Department of the Interior, Bureau of Land Management or by a decree of a Court of Law and /or that the corner points mentioned in lines 3, 4 and 5 above were in conformance with the rules of the Michigan Board of Land Surveyors or by a Decree of a Court of Law; established, re-established, monumented, recovered, found as expressed below.

**NOTE:** Not more than 2 corners, all in the same town and range, may be recorded on this certificate.



**A. Description of original monument and accessories and/or subsequent restoration:**  
 (11-Sec. 3) Southwest 1/16 corner. Not established in the original survey. Found no subsequent record.  
 (10-Sec. 3) South 1/16 corner between Sections 3 and 4. Not established in the original survey. Found no subsequent record.

**B. Description of corner evidence found and/or method applied in restoring or reestablishing corner:**  
 (11-Sec. 3) Established the corner at the intersection of straight lines connecting opposite 1/16 corners.  
 (10-Sec. 3) Established the corner midway and on a straight line between Section corner 1327.87' south and Quarter corner 1327.87' north.

**C. Description of monument for corner and accessories established to perpetuate locating the position of the corner:**

(11) Set 1"IDx36" I.pipe with 4" alum. MDNR cap. Blazed, scribed, and set measuring nails in: 6" Maple S07W 19.7' "SW1/16 BT" 12" Maple S22E 11.45' do 6" Maple N87E 3.2' do 10" Maple N05W 13.15' do Set cedar post adjacent. Bearings are magnetic. Distances are to nail with tag.	(10) Set 1"IDx36" I.pipe with 4" alum. MDNR cap. Blazed, scribed, and set measuring nails in: 12" Maple N44W 7.05' "S1/16 BT" 8" Maple N08E 9.9' do 10" Maple S25E 16.3' do 10" Maple S55W 21.05' do Set cedar post adjacent. Bearings are magnetic. Distances are to nail with tag.
--	---



Signed by Stephan J. Szyszkoski Date 12/10/02  
 Surveyor's Michigan License No. 33986