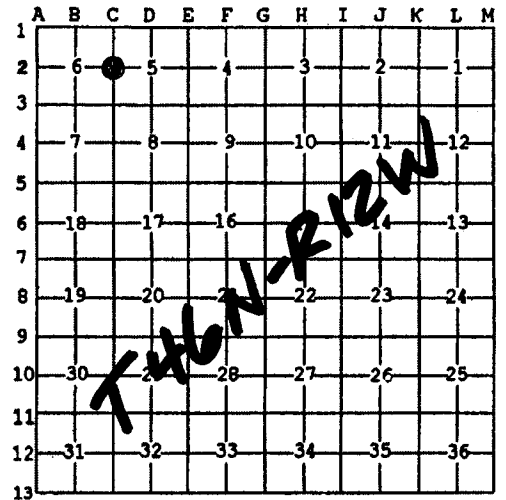


LAND CORNER RECORDATION CERTIFICATE
Filing Requirement of Act 74, Mich. P.A. 1970 as Amended

For corners in

<u>Luce</u> (County)	Located In:	Corner Code #
1. Public Land Survey	T <u>46N</u> R <u>12W</u>	<u>C2</u>
	T _____ R _____	_____
	T _____ R _____	_____
2. Property Controlling in Section	S _____ T _____ R _____	_____
	S _____ T _____ R _____	_____
3. Miscellaneous Property in Sec.	S _____ T _____ R _____	_____
	S _____ T _____ R _____	_____
4. Lot No. _____, Recorded Plat _____		
5. Private Claims		

Register of Deeds Stamp & File Number



Sep 18 2006

I, Stephan J. Szyszkoski, in a field survey on _____, 20____ do hereby state that under requirements of P.A. 74, Michigan P.A. of 1970, the corner points mentioned in lines 1 and 2 above were in conformance with regulations and rules therefore as required in the current manual of survey instructions of the United States Department of the Interior, Bureau of Land Management or by a decree of a Court of Law and /or that the corner points mentioned in lines 3, 4 and 5 above were in conformance with the rules of the Michigan Board of Land Surveyors or by a Decree of a Court of Law; established, re-established, monumented, recovered, found as expressed below:

NOTE: Not more than 2 corners, all in the same town and range, may be recorded on this certificate.

A. Description of original monument and accessories and/or subsequent restoration:

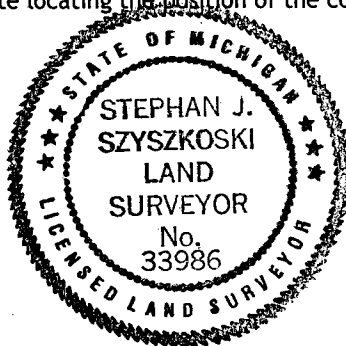
(C2) Quarter corner common to Sections 5 and 6. 1851 - Established by Francis Colman, Deputy Surveyor: Set post on line between Section corners 40.00 chains south and 39.31 chains north. Bearing trees: Spruce Pine 4" N29W 140 links, Y.Pine 12" S88E 179 links. 1977 - Reestablished by Billy D. Buckler RLS on line and by single proportionate measure between two Section corners. No evidence of original witnesses. Set 1" pipe with 4" aluminum cap. New bearings: 6" J.Pine S35E 6.1', 6" J.Pine N34E 45.8'.

B. Description of corner evidence found and/or method applied in restoring or reestablishing corner:

(C2) The original post and accessories were not recovered. The 1977 monument and accessories were not recovered, having likely been destroyed by road construction. Reestablished the corner on line between Section corners 2665.66' south and 2619.67 north, being proportionate to the original record.

C. Description of monument for corner and accessories established to perpetuate locating the position of the corner:

(C2) Set 1"IDx36" I.pipe with 4" alum. MDNR cap. Set measuring nails in:
 3" J.Pine N38W 18.23' not marked
 3" J.Pine N77E 14.45' do
 3" J.Pine S12E 37.82' do
 3" J.Pine S27W 42.07' do
 Bearings are magnetic. Distances are to nail with MDNR tag.



Signed by Stephan J. Szyszkoski
 Surveyor's Michigan License No. 33986

Date 12/13/06

For the Michigan Department of Natural Resources, Office of Land and Facilities