

LAND CORNER RECORDATION CERTIFICATE
Filing Requirement of Act 74, Mich. P.A. 1970 as Amended

For corners in

<u>Luce</u> (County)	Located In:	Corner Code #
1. Public Land Survey	T <u>46N</u> R <u>12W</u>	<u>E2</u>
	T _____ R _____	_____
	T _____ R _____	_____
2. Property Controlling in Section	S _____ T _____ R _____	_____
	S _____ T _____ R _____	_____
3. Miscellaneous Property in Sec.	S _____ T _____ R _____	_____
	S _____ T _____ R _____	_____

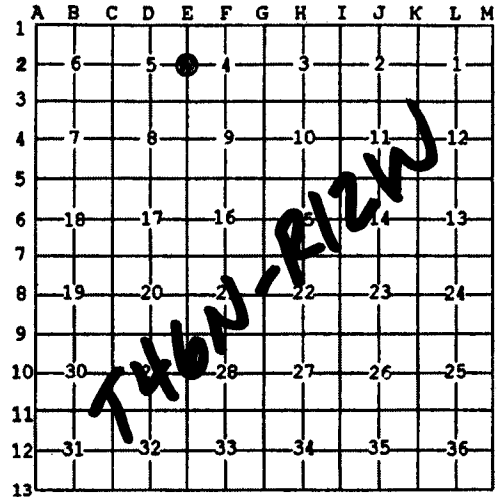
Register of Deeds Stamp & File Number

4. Lot No. _____, Recorded Plat _____
 5. Private Claims _____

Oct 02 2006

I, Stephan J. Szyszkoski, in a field survey on _____, 20____ do hereby state that under requirements of P.A. 74, Michigan P.A. of 1970, the corner points mentioned in lines 1 and 2 above were in conformance with regulations and rules therefore as required in the current manual of survey instructions of the United States Department of the Interior, Bureau of Land Management or by a decree of a Court of Law and /or that the corner points mentioned in lines 3, 4 and 5 above were in conformance with the rules of the Michigan Board of Land Surveyors or by a Decree of a Court of Law; established, re-established, monumented, recovered, found as expressed below:

NOTE: Not more than 2 corners, all in the same town and range, may be recorded on this certificate.



A. Description of original monument and accessories and/or subsequent restoration:

(E2) Quarter corner common to Sections 4 and 5. 1851 - Established by Francis Colman, Deputy Surveyor: S12'E corrected between Sections 4 & 5 ...38.93 Set qr. sec. post. W.Pine 9 N39W 52 links, Y.Pine 10 S56E 20 links. ...78.93 Set post cor. Secs. 4,5,8 & 9. Found no subsequent record.

B. Description of corner evidence found and/or method applied in restoring or reestablishing corner:

(E2) The original post and accessories were not recovered. Found no evidence of the position of the original corner on the ground. Reestablished the corner by single proportionate measurement to the original record, on the Section line between Section corners 2638.46' south and 2567.88' north.

C. Description of monument for corner and accessories established to perpetuate locating the position of the corner:

(E2) Set 1"IDx32" I.pipe with 4" alum.
 MDNR cap. Set measuring nails in:
 9" R.Pine S06W 109.80' wrkd "1/4S NBT"
 3" J.Pine S29W 63.23' not marked
 3" J.Pine S86W 87.07' do
 3" J.Pine S38E 76.73' do
 Bearings are magnetic. Distances are to nail with MDNR tag.



Signed by Stephan J. Szyszkoski
 Surveyor's Michigan License No. 33986

Date 12/13/06

For the Michigan Department of Natural Resources, Office of Land and Facilities