

MICHIGAN
DEPARTMENT OF CONSERVATION
FORESTRY DIVISION

LAND CORNER RECORD

T. 47-48 N.R. 9 W

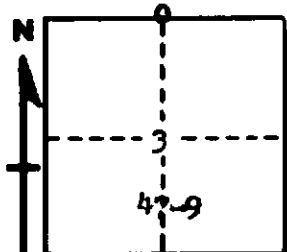
Luce COUNTY

DESCRIPTION OF CORNER 1/4 Corner for Secs. 3, T47N R9W & 34, T48N R9W

CORNER MONUMENT 1" Iron Pipe with 4" Aluminum Cap

DATE MONUMENT PLACED AND WITNESSED 6/3/65 with R. Hinds

WITNESSES TO CORNER..... 8" Y. Birch (1/4S NBT), S 60° W, 33 1/2 Lks.



9" Hemlock (1/4S NBT), S 48° E, 74 1/2 Lks.

20" Hemlock (Original BT), N 65° E, 16 Lks.

AND

CIRCLE CORNER REGISTERED

DESCRIPTION IN DETAIL AS TO HOW CORNER WAS LOCATED AND IDENTIFIED OR RESTORED.

This Corner was replaced from Scribed wood post with a Original growing BT.
(Hemlock, now 20" N 65° E 16 Lks.) other stump badly rotted is in the proper
position.

SURVEYOR'S SEAL

SIGNED Frank J. Bray DATE 11/19/1965
REGISTERED LAND SURVEYOR