

MICHIGAN
DEPARTMENT OF CONSERVATION
FORESTRY DIVISION

LAND CORNER RECORD

T. 47N N. R. 9W

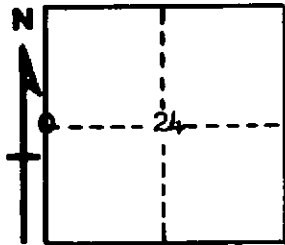
Luce COUNTY

DESCRIPTION OF CORNER 1/4 section corner between 23-24

CORNER MONUMENT 1" pipe with 4" aluminum cap.

DATE MONUMENT PLACED AND WITNESSED 7-25-62

WITNESSES TO CORNER..... 8" Cedar (1/4 S NBT) N16°E, 28 1/2 links



8" Cedar (1/4 S NBT) N48°W, 38 links

AND

CIRCLE CORNER REGISTERED

DESCRIPTION IN DETAIL AS TO HOW CORNER WAS LOCATED AND IDENTIFIED OR RESTORED.

This corner replaced at wood post believed to be set by H. Lawrence, Registered Land surveyor.

SURVEYOR'S SEAL

SIGNED Billy D. Buckler DATE April 26, 1963
REGISTERED LAND SURVEYOR
Billy D. Buckler