

MICHIGAN
DEPARTMENT OF CONSERVATION
FORESTRY DIVISION

LAND CORNER RECORD

T. 47 N. R. 9W

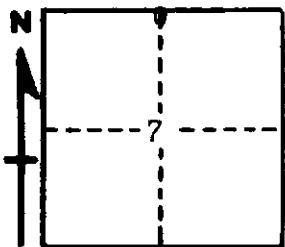
Luce COUNTY

DESCRIPTION OF CORNER 1/4 Corner between Secs. 6-7

CORNER MONUMENT 1" Iron Pipe with 4" Aluminum Cap

DATE MONUMENT PLACED AND WITNESSED 2/18/64 with Forestry Aide, Kubick

WITNESSES TO CORNER..... 12" Cedar ($\frac{3}{4}$ S NBT) S65°E, 23 lks.



6" Cedar ($\frac{3}{4}$ S NBT) N15°W 16 lks.

AND

CIRCLE CORNER REGISTERED

DESCRIPTION IN DETAIL AS TO HOW CORNER WAS LOCATED AND IDENTIFIED OR RESTORED.

This Corner was replaced from woodpost which is proper distance and bearing from Spruce stub. (Spruce 10" S42°W, 11 lks.)

SURVEYOR'S SEAL

SIGNED Frank J. Bray DATE 8/13/1964
REGISTERED LAND SURVEYOR