

MICHIGAN
DEPARTMENT OF CONSERVATION
FORESTRY DIVISION

LAND CORNER RECORD

T. 47 N. R. 9W

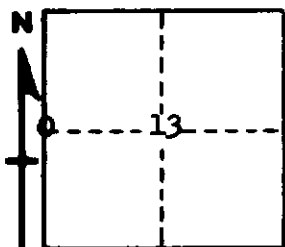
Luce COUNTY

DESCRIPTION OF CORNER 1/4 Corner for Sections 13-14

CORNER MONUMENT 1" Pipe with 4" Aluminum Cap.

DATE MONUMENT PLACED AND WITNESSED 12-13-61 with L. Rubick, Aide

WITNESSES TO CORNER..... 9" Red Pine (1/4 S NBT) S3° E 42 links



7" W. Pine (1/4 S NBT) S59° E 55 links

AND

CIRCLE CORNER REGISTERED

DESCRIPTION IN DETAIL AS TO HOW CORNER WAS LOCATED AND IDENTIFIED OR RESTORED.

This corner was replaced at scribed wood post probably set by H. Lawrence, Registered Land Surveyor.

Found Pine B.T. in proper position.
Corner lies in marsh near south edge.

SURVEYOR'S SEAL

SIGNED Billy D. Buckler DATE January 30, 1962
REGISTERED LAND SURVEYOR
Billy D. Buckler