

LAND CORNER RECORDATION CERTIFICATE
Filing Requirement of Act 74, Mich. P.A. 1970

For corners in
Luce

(County)	Located In:	Corner Code #
1. Public Land Survey	T 47N R 10W	G13
	T 47N R 10W	E11
	T R	
	T R	
2. Property Controlling in Section	S T R	
	S T R	
3. Miscellaneous Property in Sec.	S T R	
	S T R	

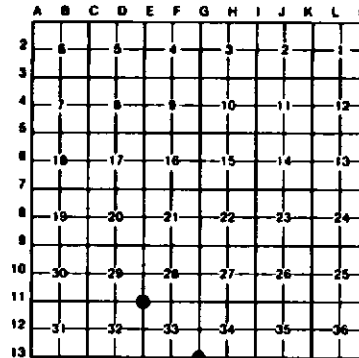
Register of Deeds Stamp & File Number

4. Lot No. _____, Recorded Plat _____
5. Private Claims _____

E11 April 25, 1994

I, Stephan J. Szyszkoski, in a field survey on G13 September 06, 1994, 19_____, do hereby certify that under requirements of P.A. 74, Michigan P.A. of 1970, the corner points mentioned in lines 1 and 2 above were in conformance with regulations and rules therefore as required in the current manual of survey instructions of the United States Department of the Interior, Bureau of Land Management or by a decree of a Court of Law and/or that the corner points mentioned in lines 3, 4 and 5 above were in conformance with the rules of the Michigan Board of Land Surveyors or by a Decree of a Court of Law, established, re-established, monumented, re-monumented, recovered, found as expressed below:

NOTE: Not more than 4 corners, all in the same town and range, may be recorded on this certificate.



A. Description of original monument and accessories and/or subsequent restoration:

(G13) Corner common to Sections 33-34 T47N-R10W, and Sections 3-4 T46N-R10W. Corner reestablished in 1964 by Frank J. Bray, RLS, as follows: This corner was reestablished by placing it on line and midway between 1/4 corners 1/2 mile to east and west. Corner monument 1/2"x12" Reinforcing rod driven 4" below surface of blacktop. 5" Soft maple (in clump) S02E 64 links, 5" Soft maple (in clump) N04E 62 links. Corner lies 6 links north of approximate center line of blacktop road Co. 407'.

(E11) Corner common to Sections 28-29-32-33. Corner reestablished in 1973 by Billy D. Buckler, RLS, as follows: Set at Sq. post set by unknown Surveyors, 4.0' West. Corner lies 94' North of E-W brushed line. Set by single proportionate measure and record bearing bet. Corners one mile to East and one mile to West. Placed 1"x36" pipe with Dept. of Natural Resources cap. New bearings 8" N. Maple N75W 20.7', 8" N. Maple N02E 19.0.

B. Description of corner evidence found and/or method applied in restoring or reestablishing corner:

(G13) Found and accepted Bray's 1964 monument in good condition at record bearing and distance from the remaining witness Soft Maple Southeast. The other NBT has been removed. Marked new witnesses as described below.

(E11) Found and accepted Buckler's monument, in good condition, at record bearing and distance from his Sugar NBT NW, now 12" dia. The other NBT is gone. Left the monument in place and marked new witnesses as described below.

C. Description of monument for corner and accessories established to perpetuate locating the position of the corner:

(G13) Found 1/2" dia. reinforcing rod below asphalt surface. Placed measuring nails with tags in the following:

5" S. Maple S02E 42.5'
Fence post North 40.3'
Power pole NLI 167 N40E 43.2'
Power pole support S40E 41.45'
Bearings are magnetic.

(E11) Found 1" iron pipe with 4" MDNR cap. Blazed, scribed, and set measuring nails in the following:

12" N. Maple N75W 21.1' "S29"
Twin 20" spruce S02W 31.9' "S32 NBT"
4" Maple N30E 22.6' "S28 NBT"
6" Maple N02E 33.4' "S28 NBT"
Placed a squared and scribed 4" cedar post adjacent. Bearings are magnetic.



Signed by Stephan J. Szyszkoski Date 10-17-94
Surveyor's Michigan License No. 33986