

LAND CORNER RECORDATION CERTIFICATE
Filing Requirement of Act 74, Mich. P.A. 1970

For corners in
Luce

(County)	Located In:	Corner Code #
1. Public Land Survey	T 47N R 10W	G12
	T 47N R 10W	F11
	T R	
	T R	
2. Property Controlling in Section	S 33 T 47N R 10W	14
	S T R	
3. Miscellaneous Property in Sec.	S T R	
	S T R	

Register of Deeds Stamp & File Number

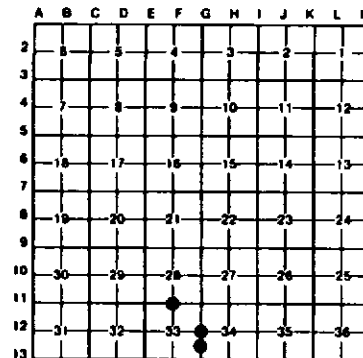
4. Lot No. _____, Recorded Plat _____
5. Private Claims _____

F11 September 08, 1994

G12 April 25, 1994

I, Stephan J. Szyszkoski, in a field survey on 14 September 06, 1994, 19_____, do hereby certify that under requirements of P.A. 74, Michigan P.A. of 1970, the corner points mentioned in lines 1 and 2 above were in conformance with regulations and rules therefore as required in the current manual of survey instructions of the United States Department of the Interior, Bureau of Land Management or by a decree of a Court of Law and/or that the corner points mentioned in lines 3, 4 and 5 above were in conformance with the rules of the Michigan Board of Land Surveyors or by a Decree of a Court of Law, established, re-established, monumented, re-monumented, recovered, found as expressed below:

NOTE: Not more than 4 corners, all in the same town and range, may be recorded on this certificate.



A. Description of original monument and accessories and/or subsequent restoration:

(G12) Quarter corner common to Sections 33-34. Corner established in 1853 by George Cannon as follows: "39.73 Set quarter Section post. Beach 4 N65W 36, Humlock 12 East 35, or post in south border of swampy land C NW and SE". Found no subsequent record.
(F11) Quarter corner common to Sections 28-33. Corner recorded pursuant to Act 74, P.A. 1970 in 1973 by Billy D. Buckler, RLS, as follows: Corner set by single proportionate measurement bet. Sec. Cor. to East and Sec. Cor. to West. Cor. lies 8.0' NE of old R.R. grade -NW&SE. 1"x36" pipe with dept. cap at corner. 10" Maple S64W 66.9', 5" Apple N59W 26.0". Found no subsequent record.
(14-Sec. 33) South 1/16 corner between Sections 33-34. Corner not established in the original survey. Found no subsequent record.

B. Description of corner evidence found and/or method applied in restoring or reestablishing corner:

(G12) Original post and accessories not recovered. Found no acceptable evidence of the position of the original corner on the ground. Reestablished the corner proportionate to the original record, midway and on a straight line between monumented section corners 2620.75' north and south. At the position for the corner, I placed a 1" I.D. x 36" iron pipe capped with a 4" dia. cast aluminum MDNR tablet.
(F11) Found Buckler's MDNR monument in good condition and at record bearing and distance from the remaining 1973 apple witness tree. Marked a new top blaze on the apple and also marked three new witnesses as described below. Determined the adjacent monumented section corners to be N85 deg. 37' 56"W 2674.77 ft. and S85 deg. 39' 01" E 2683.93 ft. I accepted the monument as a careful and faithful reestablishment of the position of the original corner. The corner lies in a clear cutting and is approximately 200-250 feet west of a Red Pine plantation. The NW corner of the plantation bears N70E.
(14-Sec. 33) Found no evidence of prior monumentation at the corner position. Established the corner midway and on a straight line between Quarter corner 1310.38' north and Section corner 1310.38' south. At the position for the corner, I placed a 1" I.D. x 36" iron pipe capped with a 4" dia. cast aluminum MDNR tablet, appropriately stamped.

C. Description of monument for corner and accessories established to perpetuate locating the position of the corner:

(G12) Set 1" iron pipe with 4" MDNR cap. Blazed, scribed, and set measuring nails in the new bearing trees: 10" Balsam S30E 1.8' "1/4S NBT" 6" Maple N54E 22.8' "1/4S NBT" 8" Maple N08E 29.05' "1/4S NBT" 6" Maple N34W 21.8' "1/4S NBT" Placed a 5" squared and scribed cedar post adjacent. Bearings are magnetic.	(F11) Found 1" iron pipe with 4" MDNR cap. Blazed, scribed, and set measuring nails in: 7" Apple N59W 26.3' "1/4S" 4" triple Maple N23E 55.4' "1/4S NBT" 5" Maple N05W 70.7' "1/4S NBT" 8" Maple N45E 60.8' "1/4S NBT" Bearings are magnetic.	(14) Set 1" iron pipe with 4" MDNR cap. Blazed, scribed, and set measuring nails in the following bearing trees: 4" W. Birch S60E 7.75' "S1/16 BT" 4" Spruce N58E 20.05' "S1/16 BT" 6" Maple N10E 7.85' "S1/16 BT" 3" Maple N30W 17.9' "S1/16 BT" Placed a 6" squared cedar post adjacent. Bearings are magnetic.
--	--	--

Signed by

Stephan J. Szyszkoski

Surveyor's Michigan License No.

33986



Date 10-17-94

For the Michigan Department of Natural Resources - Forest Management Division.