

LAND CORNER RECORDATION CERTIFICATE
Filing Requirement of Act 74, Mich. P.A. 1970

For corners in
Luce

(County)	Located In:	Corner Code #
1. Public Land Survey	T ___ R ___	_____
	T ___ R ___	_____
	T ___ R ___	_____
	T ___ R ___	_____
2. Property Controlling in Section	S <u>17</u> T <u>47N</u> R <u>10W</u>	<u>11</u>
	S ___ T ___ R ___	_____
3. Miscellaneous Property in Sec.	S ___ T ___ R ___	_____
	S ___ T ___ R ___	_____

Register of Deeds Stamp & File Number

4. Lot No. _____, Recorded Plat _____
 5. Private Claims _____

Jul 21 2004

I, Stephan J. Szyszkoski, in a field survey on _____, 19___ do hereby state that under requirements of P.A. 74, Michigan P.A. of 1970, the corner points mentioned in lines 1 and 2 above were in conformance with regulations and rules therefore as required in the current manual of survey instructions of the United States Department of the Interior, Bureau of Land Management or by a decree of a Court of Law and/or that the corner points mentioned in lines 3, 4 and 5 above were in conformance with the rules of the Michigan Board of Land Surveyors or by a Decree of a Court of Law; established, re-established, monumented, recovered, found as expressed below:

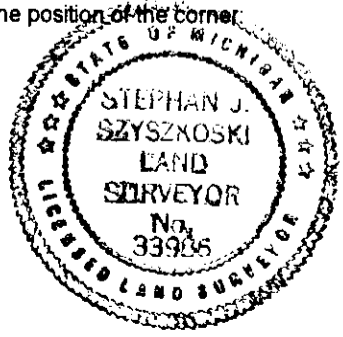
NOTE: Not more than 2 corners, all in the same town and range, may be recorded on this certificate.

	A	B	C	D	E	F	G	H	I	J	K	L	M
1													
2	6		5		4		3		2		1		
3													
4	7		8		9		10		11		12		
5													
6	18		17		16		15		14		13		
7													
8	19		20		21		22		23		24		
9													
10	30		29		28		27		26		25		
11													
12	31		32		33		34		35		36		
13													

A. Description of original monument and accessories and/or subsequent restoration:
 (11-Sec. 17) Southwest 1/16 corner, Section 17. Established at the intersection of 1/16 lines by Billy D. Buckler RLS in 1973. Set 1" iron pipe with 4" aluminum cap. 10" Hard Maple S39W 13.9', 6" Hard Maple N70W 38.1'.

B. Description of corner evidence found and/or method applied in restoring or reestablishing corner:
 (11-Sec. 17) The 1973 monument was not recovered. Remonumented the 1973 corner position at record bearing and distance from the 1973 witness trees, both recovered in good condition. Did not make any measurements to adjacent corners.

C. Description of monument for corner and accessories established to perpetuate locating the position of the corner:
 (11) Set 1" IDx36" I. pipe with 4" alum. MDNR cap. Blazed, scribed, and set measuring nails in:
 10" Maple N40W 29.35' "SW1/16 8T"
 8" Maple S44E 13.35' do
 The 1973 witnesses:
 14" Maple S44W 14.05' "SW1/16"
 10" Maple N67W 38.15' do
 Set cedar post adjacent. Bearings are magnetic. Distances are to nail with tag.
 Signed by Stephan J. Szyszkoski
 Surveyor's Michigan License No. 33986



Date 8/11/04