

✓

MICHIGAN
DEPARTMENT OF CONSERVATION
FORESTRY DIVISION

LAND CORNER RECORD

T. 47N N.R. 11W

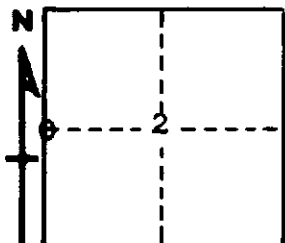
Luce COUNTY

DESCRIPTION OF CORNER ¼ Cor. bet. Secs. 2-3

CORNER MONUMENT 1" pipe with 4" aluminum cap

DATE MONUMENT PLACED AND WITNESSED 4-24-70

WITNESSES TO CORNER..... 12" W. Pine (±S NBT) S34°E 71.3'



CIRCLE CORNER REGISTERED

12" W. Pine (±S NBT) S32°W 45.0'

AND

DESCRIPTION IN DETAIL AS TO HOW CORNER WAS LOCATED AND IDENTIFIED OR RESTORED.

This corner replaced at an old cedar post. Found remains of an old cedar post.
Found remains of an older post in soil.
Found remains of a Y. Birch stump bearing S81°E 37 lks, for possible bearing tree.
Distance north (2.88 chs.) fits with record distance. Found an old line of blazes
in line with corner, to north.

SURVEYOR'S SEAL

Billy D. Buckler

SIGNED Billy D. Buckler DATE 9-24-70
REGISTERED LAND SURVEYOR