

MICHIGAN
DEPARTMENT OF CONSERVATION
FORESTRY DIVISION

LAND CORNER RECORD

T. 47N N.R. 11W

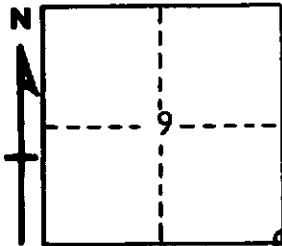
Luce COUNTY

DESCRIPTION OF CORNER Sec. Cor. common to Secs. 9-10-15-16

CORNER MONUMENT 1" pipe with 4" aluminum cap.

DATE MONUMENT PLACED AND WITNESSED 5-8-70

WITNESSES TO CORNER..... 8" Soft Maple (S9 NBT) N60°W 8.9'



CIRCLE CORNER REGISTERED

11" Hard Maple (S10 NBT) N74°E 5.4'

AND

DESCRIPTION IN DETAIL AS TO HOW CORNER WAS LOCATED AND IDENTIFIED OR RESTORED.

This corner replaced in original location by measuring record distance from a corner which had been effaced by the Deputy Surveyor running the correctional survey in this twp.

Found remains of a stump for one possible bearing tree.

Found a hemlock which had been marked then later effaced when a corrected corner was set.

SURVEYOR'S SEAL

SIGNED

Billy D. Buckler
Billy D. Buckler
REGISTERED LAND SURVEYOR

DATE

9-24-70