

LAND CORNER RECORDATION CERTIFICATE
Filing Requirement of Act 74, Mich. P.A. 1970

For corners in

Lucas

(County)

Located in:

Corner Code #

1. Public Land Survey	T 47N R 11W	112
	T R	
	T R	
	T R	
2. Property Controlling in Section	S 34 T 47N R 11W	7
	S T R	
3. Miscellaneous Property in Sec.	S T R	

Register of Deeds Stamp & File Number

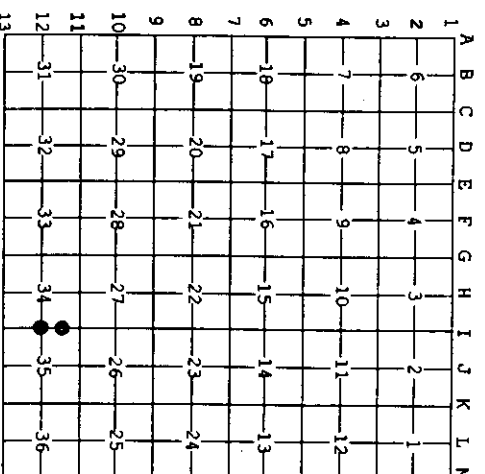
A	B	C	D	E	F	G	H	I	J	K	L	M
1												
2	6	5	4	3	2	1						
3												
4	7	8	9	10	11	12						
5												
6	18	17	16	15	14	13						
7												
8	19	20	21	22	23	24						
9												
10	30	29	28	27	26	25						
11												
12	31	32	33	34	35	36						
13												

4. Lot No. _____, Recorded Plat _____

7 Aug 11 2003
 112 Aug 05 2003

1. Stephan J. Szyszkoski in a field survey on _____ 20 _____ do hereby state that under requirements of P. A. 74, Michigan P. A. of 1970, the corner points mentioned in lines 1 and 2 above were in conformance with regulations and rules therefore as required in the current manual of survey instructions of the United States Department of the Interior, Bureau of Land Management or by a decree of a Court of Law and for that the corner points mentioned in lines 3, 4 and 5 above were in conformance with the rules of the Michigan Board of Land Surveyors or by a Decree of a Court of Law, established, re-established, monumented, recovered, found as expressed below:

NOTE: Not more than 2 corners, all in the same town and range, may be recorded on the certificate.



(112) Description of original monument and accessories and/or subsequent restoration, Buckler RLS midway and on line between Section corners.

(7-Sec. 34) North 1/16 corner between Sections 34-35. Established in 1978 by Billy D. Buckler midway and on line between 111 and 112.

B. Description of corner evidence found and/or method applied in restoring or reestablishing corner:

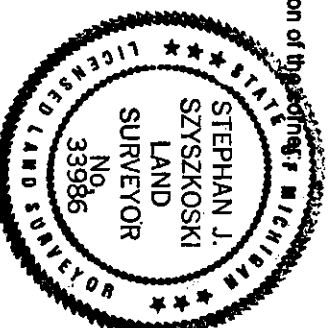
(112) The 1978 position for this corner is not correct. It was based on an erroneous position for the corner 113. Removed the 1978 monument for 112 and placed a new monument at the proper corner position, midway and on line between 111 2665.47' north and the corrected 113 2665.47' south. The corner monumented lies on the west side of a trail, in line with the edge of a J. Pine plantation to the east.

(7-Sec. 34) The 1978 position for this corner is not correct. It was based on an erroneous position for the corner 112. I removed the 1978 monument for this 1/16 corner and established the corner midway and on a straight line between 111 and the corrected 112, 1332.73' north and south.

C. Description of monument for corner and accessories established to perpetuate locating the position of the corner:

(112) Set 1" IDx36" I. pipe with 4" alum. HDRR cap. Blazed, scribed, and set measuring nails in:	(7) Set 1" ID I. pipe with 4" alum. cap (the 1978 monument). Blazed, scribed, and set measuring nails in:
5" W. pine SS1W 55.75' "1/4S N81R"	6" J. Pine S00E 25.15' "N1/16 81R"
8" J. Pine N80E 18.1'	do 8" J. Pine N85E 21.3'
6" J. Pine N49E 23.55'	do 8" J. Pine N47E 22.4'
6" J. Pine N22E 49.3'	do 6" J. Pine N30E 55.9'

Bearings are magnetic. Distances are to nail with tag. Old squared wood post was set adjacent.



Signed by Stephan J. Szyszkoski
 Surveyor's Michigan License No. 33986

Date 8/25/03

For the Michigan Department of Natural Resources - Office of Land and Facilities