

MICHIGAN  
DEPARTMENT OF CONSERVATION  
FORESTRY DIVISION

LAND CORNER RECORD

T. 48N N.R. 8W

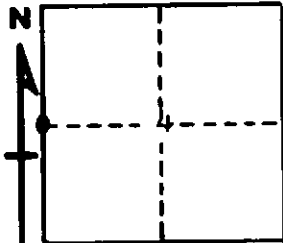
Luce COUNTY

DESCRIPTION OF CORNER  $\frac{1}{4}$  Cor. bet. Secs. 4-5

CORNER MONUMENT 1" pipe with 4" aluminum cap.

DATE MONUMENT PLACED AND WITNESSED 8-13-70

WITNESSES TO CORNER..... 13" W. Pine ( $\frac{1}{4}$ S NBT) S76°E 40.2'



12" Cedar ( $\frac{1}{4}$ S NBT) S 20°E 37.7'

AND

CIRCLE CORNER REGISTERED

**DESCRIPTION IN DETAIL AS TO HOW CORNER WAS LOCATED AND IDENTIFIED OR RESTORED.**

This corner replaced as set by H. Lawrence, R.L.S. about 1939. Found wood post in place with one original witness, a tamarack stump, bearing N85°W, 27 links with remains of bottom face evident. Corner lies in swamp.

Cor. found by L. Rubick, For. Aide.

SURVEYOR'S SEAL

SIGNED *Billy D. Buckler*  
Billy D. Buckler DATE 8-26-70  
REGISTERED LAND SURVEYOR