

✓

STATE OF MICHIGAN
DEPARTMENT
OF
NATURAL RESOURCES

LAND CORNER RECORD

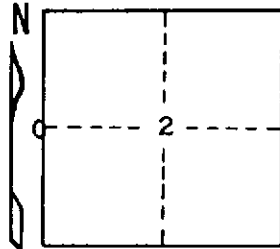
Luce COUNTY
T 48N R 8W

DESCRIPTION OF CORNER $\frac{1}{4}$ Corner bet. Secs. 2-3

CORNER MONUMENT 1" pipe with 4" aluminum cap

DATE MONUMENT PLACED AND WITNESSED 3/22/71

WITNESSES TO CORNER..... 8" W. Pine ($\frac{1}{4}$ s NBT) N60°W 53.8'



10" W. Pine ($\frac{1}{4}$ s NBT) N13°W 66.7'

AND

CIRCLE CORNER REGISTERED

DESCRIPTION IN DETAIL AS TO HOW CORNER WAS LOCATED AND IDENTIFIED OR RESTORED.

This corner replaced at a scribed post, set by H. Lawrence, R.L.S. Found no original witnesses in deep snow. Distance north to marsh edge (50 lks) checks with record.

Corner located by L. Rubick, Forestry Aide in July, 1970.

SURVEYOR'S SEAL

DISTRIBUTION:

SIGNED

Billy D. Buckler
Billy D. Buckler
REGISTERED LAND SURVEYOR

DATE

12-7-71

County Courthouse
Area Forester (Regions I & II)
District or Region Surveyor
Forestry Div., Lansing

R 4047
Rev. 10/68