

STATE OF MICHIGAN
DEPARTMENT
OF
NATURAL RESOURCES

LAND CORNER RECORD

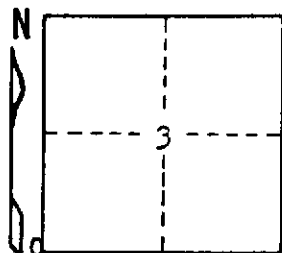
Lee COUNTY
T 48N R 8W

DESCRIPTION OF CORNER Sec. Cor. common to Secs. 3-4-9-10

CORNER MONUMENT 1" pipe with 4" aluminum cap

DATE MONUMENT PLACED AND WITNESSED 4/14/72

WITNESSES TO CORNER..... 5" Cedar (S4 NBT) N89°W 11.7'



5" Cedar (S3 NBT) N30°E 19.8'

AND

CIRCLE CORNER REGISTERED

DESCRIPTION IN DETAIL AS TO HOW CORNER WAS LOCATED AND IDENTIFIED OR RESTORED.

This corner replaced as set by H. Lawrence, R.L.S. about 1939. Found no evidence of original witnesses since area is covered with 3' + of snow. Corner is on an old line of blazes to North and South.

SURVEYOR'S SEAL

SIGNED

Billy D. Buckler
Billy D. Buckler
REGISTERED LAND SURVEYOR

DATE

4/19/72

DISTRIBUTION:

County Courthouse
Area Forester (Regions I & II)
District or Region Surveyor
Forestry Div., Lansing

R 4047
Rev. 10/68