

STATE OF MICHIGAN
DEPARTMENT
OF
NATURAL RESOURCES
LAND CORNER RECORD

Luce COUNTY

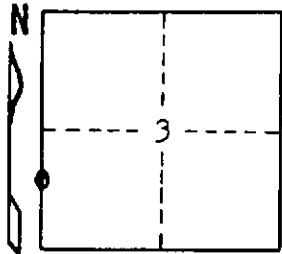
T 48N R 8W

DESCRIPTION OF CORNER South 1/16 Corner, bet. Secs. 3-4

CORNER MONUMENT 1" pipe with 4" aluminum cap

DATE MONUMENT PLACED AND WITNESSED 4/12/72

WITNESSES TO CORNER..... 18" Red Pine (1/16 NBT) N50°W 123.0'



AND

CIRCLE CORNER REGISTERED

DESCRIPTION IN DETAIL AS TO HOW CORNER WAS LOCATED AND IDENTIFIED OR RESTORED.

This corner replaced as set by H. Lawrence, R.L.S. about 1939.

Found a squared, scribed wood post in place.

Corner lies in an open spruce marsh.

SURVEYOR'S SEAL

SIGNED

Billy D. Buckler
Billy D. Buckler
REGISTERED LAND SURVEYOR

DATE

4/19/72

DISTRIBUTION:

County Courthouse
Area Forester (Regions I & II)
District or Region Surveyor
Forestry Div., Lansing

R 4047
Rev. 10/68