

MICHIGAN
DEPARTMENT OF CONSERVATION
FORESTRY DIVISION

LAND CORNER RECORD

T. 48 N.R. 9W

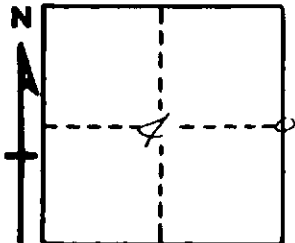
Luce COUNTY

DESCRIPTION OF CORNER $\frac{1}{4}$ Cor. between Secs. 3-4

CORNER MONUMENT 1" pipe with 4" aluminum cap.

DATE MONUMENT PLACED AND WITNESSED (10" Red Pine ($\frac{1}{4}$ S NBT) N 13°W 14.7') 7/11/68

WITNESSES TO CORNER..... 15" Red Pine ($\frac{1}{4}$ S NBT) East 30.4'



CIRCLE CORNER REGISTERED

DESCRIPTION IN DETAIL AS TO HOW CORNER WAS LOCATED AND IDENTIFIED OR RESTORED.

This corner re-established on line and by single proportionate measure between two section corners. Found old blazes to North and South, along line but no evidence of spruce witnesses.

Corner lies 10' East of woods road.

SURVEYOR'S SEAL

Billy D. Buckler
SIGNED Billy D. Buckler R.L.S. DATE 9/13/68
REGISTERED LAND SURVEYOR