

MICHIGAN
DEPARTMENT OF CONSERVATION
FORESTRY DIVISION

LAND CORNER RECORD

T. 48N N.R. 11W

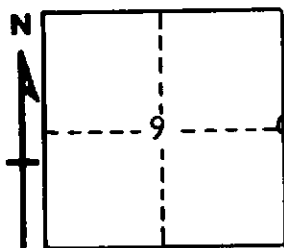
Luce COUNTY

DESCRIPTION OF CORNER ¼ Cor. bet. Secs. 9-10

CORNER MONUMENT 1" pipe with 4" aluminum cap

DATE MONUMENT PLACED AND WITNESSED 8-28-70

WITNESSES TO CORNER..... 9" Red Pine (¼S NBT) N50°W 49.3'



14" Red Pine (¼S NBT) N41°E 47.8'

AND

CIRCLE CORNER REGISTERED

DESCRIPTION IN DETAIL AS TO HOW CORNER WAS LOCATED AND IDENTIFIED OR RESTORED.

This corner replaced from one probable B.T.; a W. Pine stump bearing N24°W, 81 links. Corner lies in a marsh and on north side of a wet pond, as indicated in the record notes. Found an old blazed line north and south. Distance checks to a good corner ½ mile north and to marsh edge, 2.00 chs. south.

SURVEYOR'S SEAL

SIGNED *Billy D. Buckler* DATE 9-22-70
Billy D. Buckler
REGISTERED LAND SURVEYOR