

MICHIGAN
DEPARTMENT OF CONSERVATION
FORESTRY DIVISION

LAND CORNER RECORD

T. 48-49 N.R. 12W

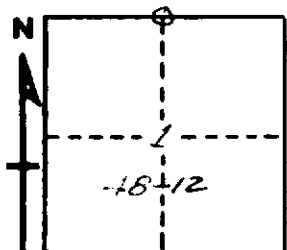
Luce COUNTY

DESCRIPTION OF CORNER $\frac{1}{4}$ Corner between secs. 36-1

CORNER MONUMENT 1" pipe with 4" aluminum cap.

DATE MONUMENT PLACED AND WITNESSED 7/11/68

WITNESSES TO CORNER..... 16" Hemlock S33°E 35.9'



15" Soft Maple S35°W 11.7'

AND

CIRCLE CORNER REGISTERED

DESCRIPTION IN DETAIL AS TO HOW CORNER WAS LOCATED AND IDENTIFIED OR RESTORED.

This corner replaced at wood post apparently set by
J. McLaren, Newberr.
Found maple and hemlock stump bottoms in proper position
for bearing trees.
Numerous blazes at corner.
Corner placed with L. Rubick, Forestry Aide, Newberry.

SURVEYOR'S SEAL

Billy D. Buckler
SIGNED Billy D. Buckler, R.L.S. DATE 9/13/68
REGISTERED LAND SURVEYOR