

STATE OF MICHIGAN
DEPARTMENT
OF
NATURAL RESOURCES

LAND CORNER RECORD

Luce COUNTY

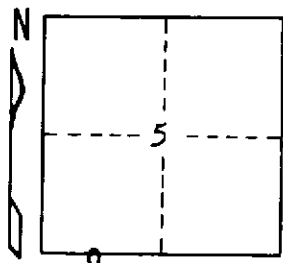
T 49N R 9W

DESCRIPTION OF CORNER West 1/16 Cor. Bet. Secs. 5-8

CORNER MONUMENT 1" pipe with 4" aluminum cap

DATE MONUMENT PLACED AND WITNESSED 7/8/71

WITNESSES TO CORNER..... 8" J. Pine N48°W 75.5'



10" J. Pine S04°E 35.4'

AND

CIRCLE CORNER REGISTERED

DESCRIPTION IN DETAIL AS TO HOW CORNER WAS LOCATED AND IDENTIFIED OR RESTORED.

Corner lies in south rut of E-W fireline.

Corner placed midway and on line bet. Sec. Cor. to west and $\frac{1}{4}$ Cor. to east.

SURVEYOR'S SEAL

Billy D. Buckler

SIGNED Billy D. Buckler
REGISTERED LAND SURVEYOR

DATE 12/17/71

DISTRIBUTION:

County Courthouse
Area Forester (Regions I & II)
District or Region Surveyor
Forestry Div., Lansing ✓

R 4047
Rev. 10/68